

APP CRS <b>179°</b>	Rwy Idg <b>5000</b>
	TDZE <b>1316</b>
	Apt Elev <b>1321</b>

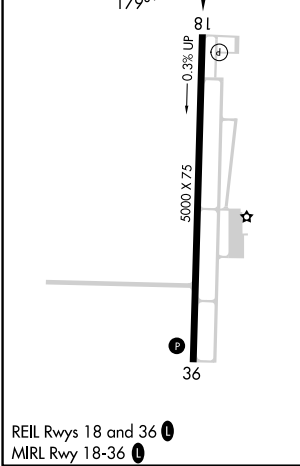
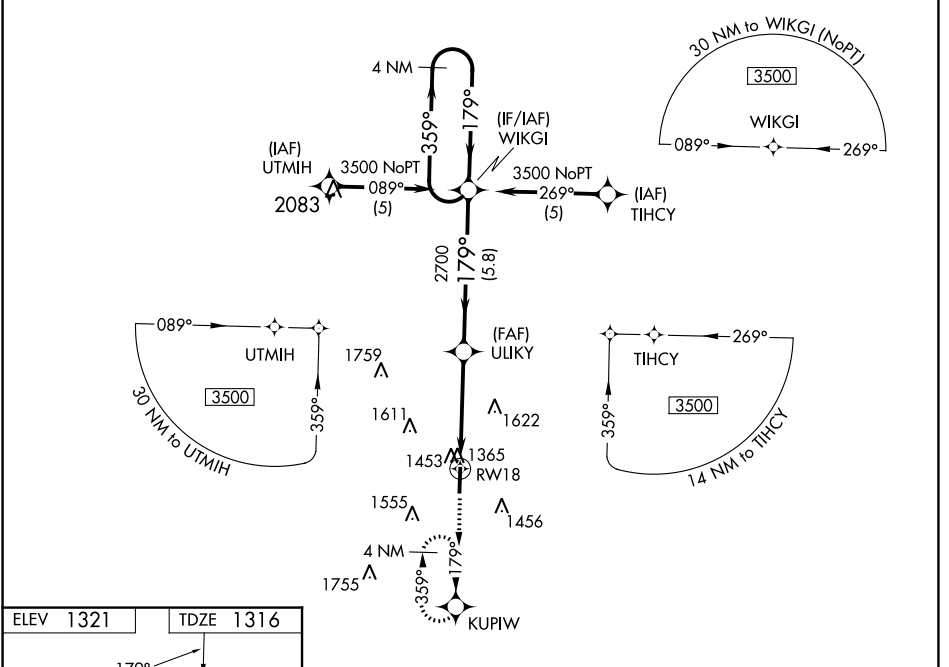
# RNAV (GPS) RWY 18

FLOYD W JONES LEBANON (LBO)

When local altimeter setting not received, use Springfield-Branson Ntl altimeter setting: increase LNAV/VNAV DA to 2043 feet; increase all MDAs 120 feet and Circling visibility Cat C/D ½ SM. Baro-VNAV NA when using Springfield-Branson Ntl altimeter setting. Baro-VNAV NA below -17° C (1° F). DME/DME RNP-0.3 NA.

**MISSED APPROACH:** Climb to 3500 direct KUPIW and hold.

AWOS-3PT <b>118.975</b>	SPRINGFIELD APP CON <b>121.1 290.5</b>	CLNC DEL <b>123.725</b>	UNICOM <b>122.8 (CTAF) 0</b>
----------------------------	---	----------------------------	---------------------------------



3500	KUPIW	VGSI and descent angles not coincident (VGSI Angle 3.00/ TCH 40).	4 NM Holding Pattern	
		*LNAV only, VDP NA when using Springfield-Branson Ntl altimeter setting.		
	ULIKY	WIKGI	3500	
	RW18	2700	GP 3.00° TCH 40	
	1.3	2.9 NM	5.8 NM	
CATEGORY	A	B	C	D
GLS PA DA	NA			
LNAV/VNAV DA	1937-2¼ 621 (700-2¼)			
LNAV MDA	1760-1	444 (500-1)	1760-1¼	444 (500-1¼)
CIRCLING	1820-1 499 (500-1)	1860-1 539 (600-1)	1980-1¾ 659 (700-1¾)	1980-2 659 (700-2)

NC-3, 05 SEP 2024 to 03 OCT 2024

NC-3, 05 SEP 2024 to 03 OCT 2024