

APP CRS	Rwy Idg	3005
359°	TDZE	60
	Apt Elev	62

RNAV (GPS) RWY 36

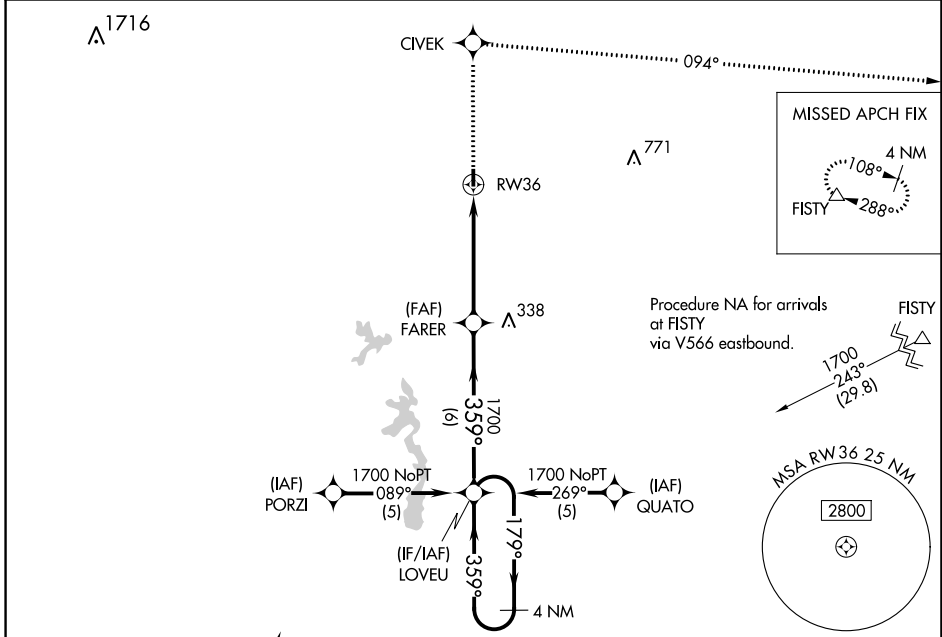
BUNKIE MUNI (2R6)

NA DME/DME RNP-0.3 NA. Visibility reduction by helicopters NA. Use Alexandria Intl altimeter setting; when not received, use Esler Rgnl altimeter setting.

MISSED APPROACH: Climb to 4000 direct CIVEK and right turn via 094° track to FISTY and hold.

POLK APP CON
125.4 302.2

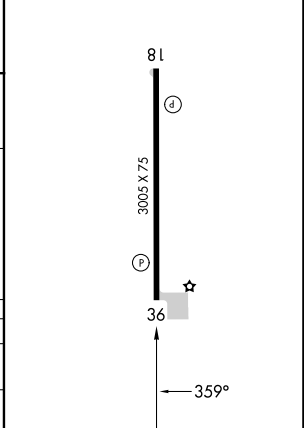
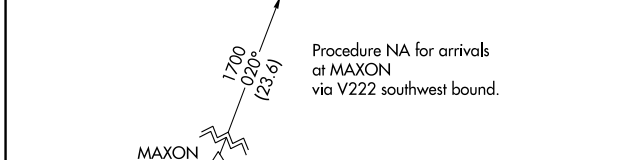
CTAF
122.9



ELEV	62	TDZE	60
------	-----------	------	-----------

REIL Rwy 18 and 36 **1**

MIRL Rwy 18-36 **1**



VGSI and descent angles not coincident (VGSI Angle 3.25/TCH 26).	4000 CIVEK	FISTY
4 NM Holding Pattern	LOVEU	FARER
1700	179°	359°
359°	359°	1700
		RW36
		3.04°
		TCH 40
	6 NM	5 NM

CATEGORY	A	B	C	D
RNAV MDA	580-1 520 (600-1)		NA	
CIRCLING	580-1 518 (600-1)	660-1 598 (600-1)	NA	

SC-4, 05 SEP 2024 to 03 OCT 2024

SC-4, 05 SEP 2024 to 03 OCT 2024