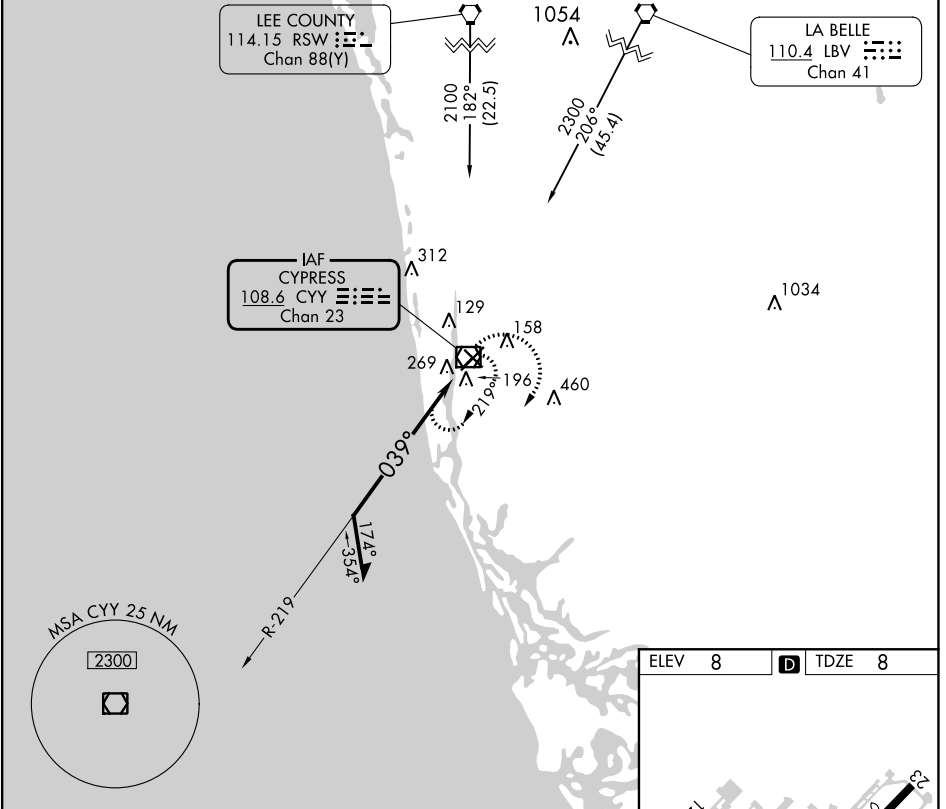


VOR/DME CYY	APP CRS	Rwy Idg TDZE	5000
<b>108.6</b>	<b>039°</b>	Apt Elev	<b>8</b>
Chan 23			

# VOR RWY 5

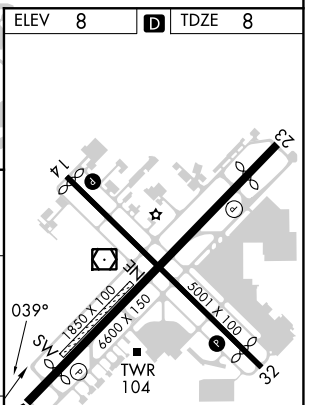
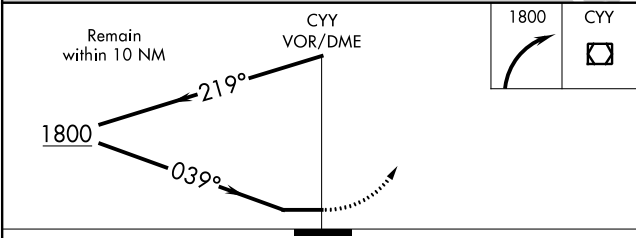
NAPLES MUNI (APF)

		MISSED APPROACH: Climbing right turn to 1800 in CYY VOR/DME holding pattern.			
ATIS	FORT MYERS APP CON*	NAPLES TOWER*	GND CON	CLNC DEL	CLNC DEL
<b>134.225</b>	<b>124.125 371.85</b>	<b>128.5 (CTAF) 0</b>	<b>121.6</b>	<b>118.0</b>	<b>124.125</b> (When twr closed)



SE-3, 05 SEP 2024 to 03 OCT 2024

SE-3, 05 SEP 2024 to 03 OCT 2024



CATEGORY	A	B	C	D
S-5	580-1	572 (600-1)	580-1 $\frac{5}{8}$	572 (600-1 $\frac{5}{8}$ )
CIRCLING	580-1	572 (600-1)	680-2 672 (700-2)	820-2 $\frac{3}{4}$ 812 (900-2 $\frac{3}{4}$ )

MIRL Rwy 5-23 and 14-32  
REIL Rwy 5, 14, 23 and 32