

WAAS CH <b>93934</b> <b>W02A</b>	APP CRS <b>021°</b>	Rwy Idg TDZE <b>718</b> Apt Elev <b>718</b>	<b>5001</b>
--	------------------------	---	-------------

# RNAV (GPS) RWY 2

ELLINGTON (LUG)

RNP APCH-GPS.

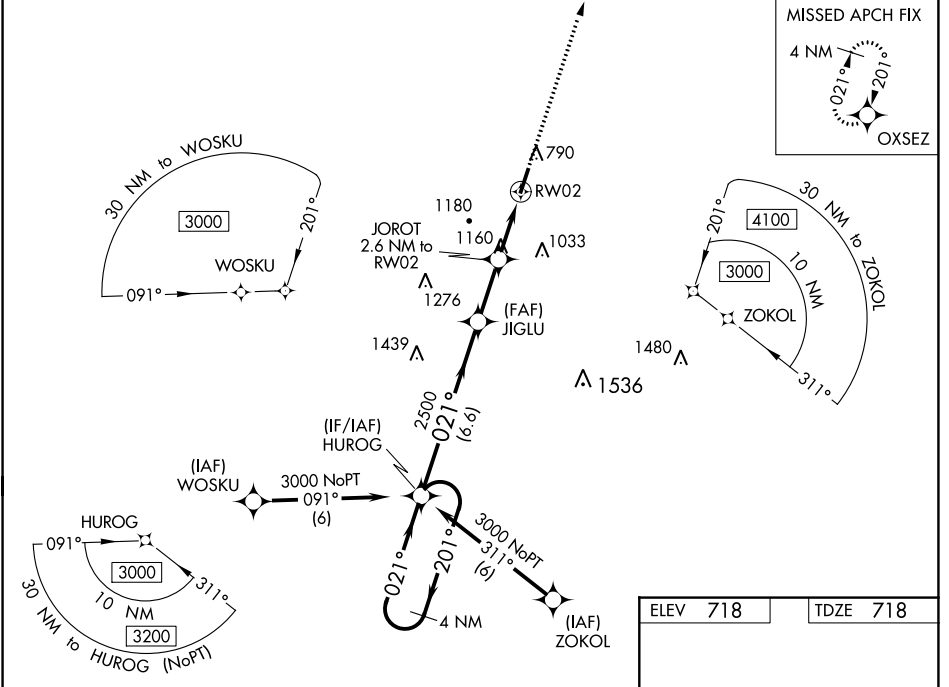
**⚠** When local altimeter setting not received, use Nashville Intl altimeter setting: increase LPV DA to 1096 feet and all visibilities  $\frac{1}{8}$  SM and LNAV/VNAV DA to 1531 feet and all visibilities  $\frac{1}{2}$  SM; increase all MDA 120 feet and visibility LNAV Cats B/C/D and Circling Cats A/B/C  $\frac{1}{2}$  SM. Baro-VNAV NA when using Nashville Intl altimeter. For uncompensated Baro-VNAV systems, LNAV/VNAV NA below -16°C or above 54°C. Rwy 2 helicopter visibility reduction below  $\frac{3}{4}$  SM NA. Circling Rwy 20 NA at night.

MISSED APPROACH:  
Climb to 3000 direct  
OXSEZ and hold.

AWOS-3  
**135.775**

MEMPHIS CENTER  
**128.15 323.125**

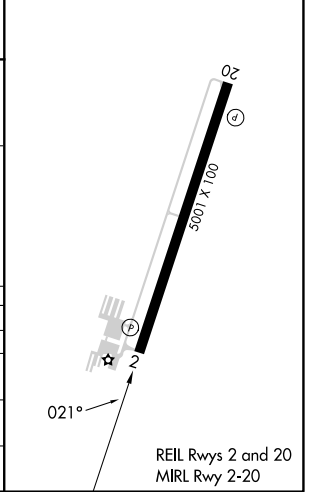
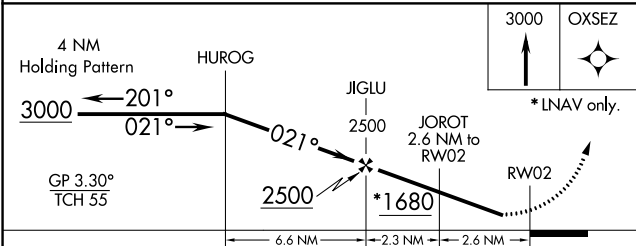
UNICOM  
**122.8 (CTAF)**



SE-1, 05 SEP 2024 to 03 OCT 2024

SE-1, 05 SEP 2024 to 03 OCT 2024

ELEV 718	TDZE 718
----------	----------



CATEGORY	A	B	C	D
LPV DA	993- $\frac{7}{8}$	275 (300- $\frac{7}{8}$ )		NA
LNAV/VNAV DA	1428-2	710 (800-2)		NA
LNAV MDA	1420-1	702 (800-1)	1420-2	702 (800-2)
<b>C</b> CIRCLING	1420-1 702 (800-1)	1480-1 762 (800-1)	1540-2 $\frac{1}{2}$ 822 (900-2 $\frac{1}{2}$ )	1640-3 922 (1000-3)