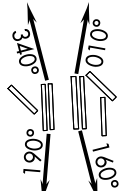


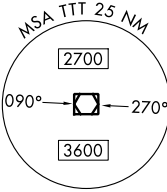
JOE POOL SEVEN DEPARTURE

TOP ALTITUDE:
RWYS 13L/R, 17L/C/R, 18L/R,
35L/C/R, 36L/R: 10000
RWYS 31L/R: 5000

REGIONAL DEP CON
125.125 353.95 (Rwys 17C/R, 18L/R)
126.475 363.15 (Rwys 36L/R)
118.55 290.35 (Rwys 35L/C
D-ATIS DEP 135.925
CLNC DEL 128.25
CPDLC
GND CON
121.65 121.8 (EAST)
121.85 (WEST)
DFW TOWER
126.55 127.5 (EAST)
124.15 134.9 (WEST)



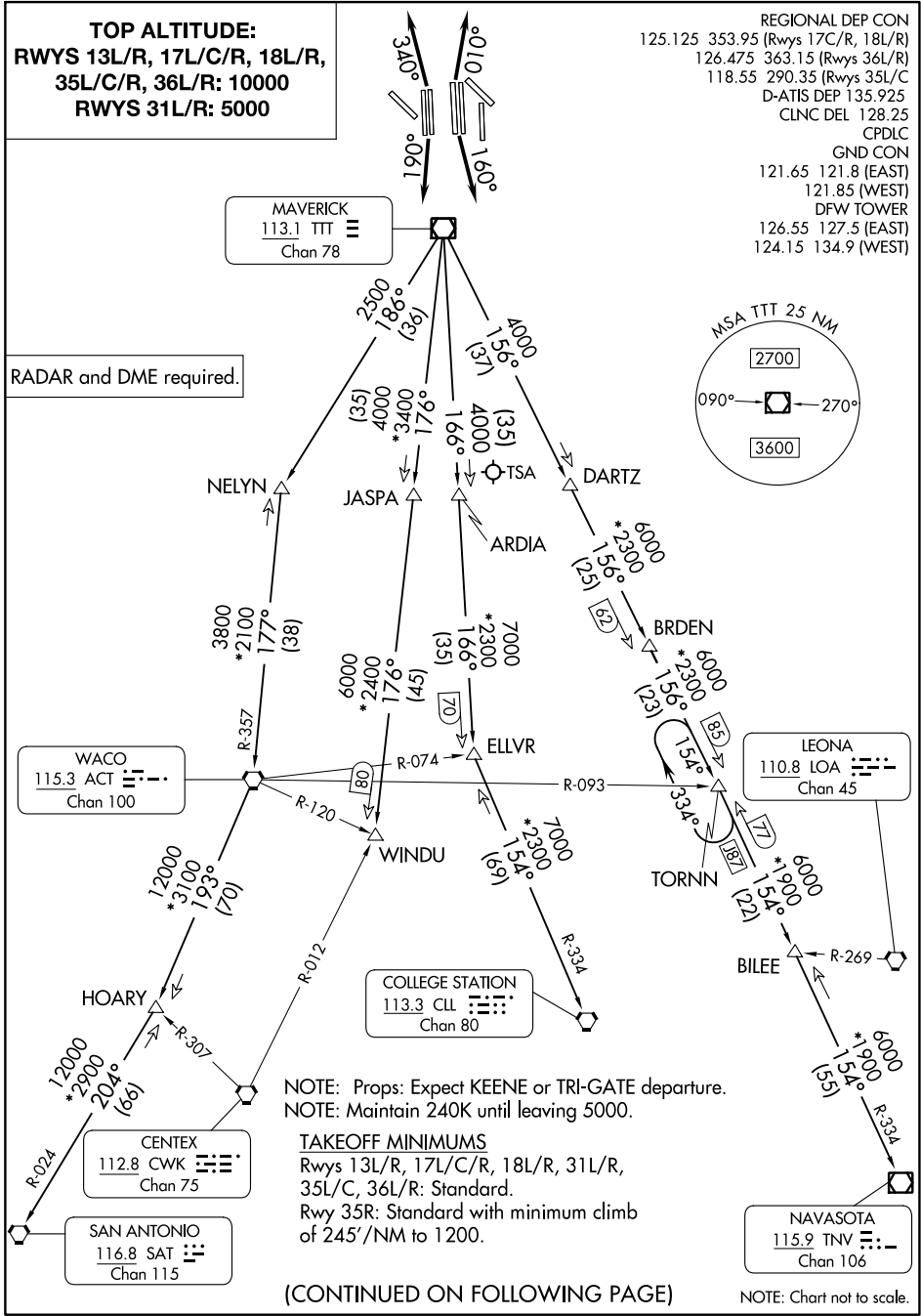
MAVERICK
113.1 TTT
Chan 78



RADAR and DME required.

SC-2, 05 SEP 2024 to 03 OCT 2024

SC-2, 05 SEP 2024 to 03 OCT 2024



NOTE: Props: Expect KEENE or TRI-GATE departure.
NOTE: Maintain 240K until leaving 5000.

TAKEOFF MINIMUMS
Rwys 13L/R, 17L/C/R, 18L/R, 31L/R,
35L/C, 36L/R: Standard.
Rwy 35R: Standard with minimum climb
of 245'/NM to 1200.

(CONTINUED ON FOLLOWING PAGE)

NOTE: Chart not to scale.

JOE POOL SEVEN DEPARTURE