

SC-2, 05 SEP 2024 to 03 OCT 2024

TOP ALTITUDE:
RWYS 31L/R: 5000
RWYS 17C/R, 18L/R,
35L/C, 36L/R: 10000

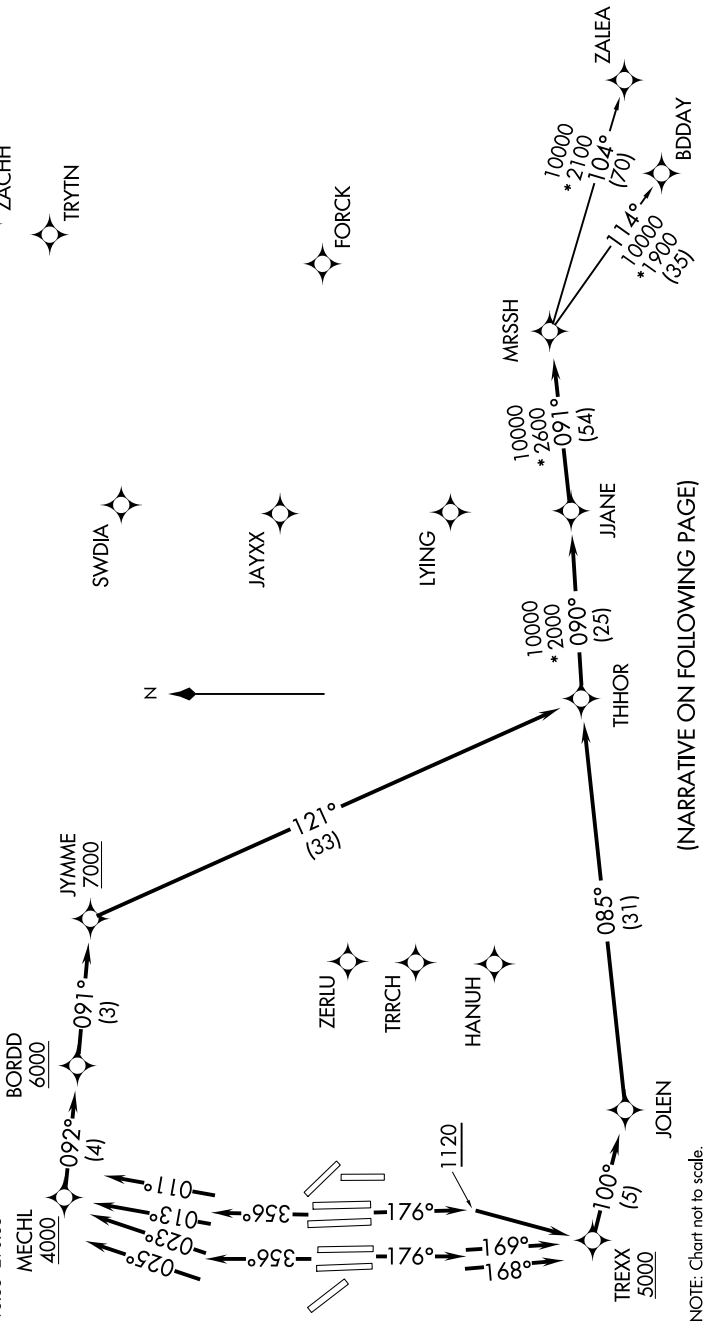
RNAV 1 - DME/DME/IRU or GPS.
RADAR required.

TAKEOFF MINIMUMS

Rwys 31L/R: Standard.
Rwys 17C/R, 18L/R, 35L/C, 36L/R: Standard
with minimum climb of 500' per NM to 1120.

NOTE: BDDAY Transition: ATC assigned only.
NOTE: For use by turbojet aircraft only.
NOTE: Non-RNAV capable props: file and expect DALLAS or GARLAND DEPARTURE.
NOTE: RNAV-capable props: file and expect the KUSSO RNAV DEPARTURE.

D-ATIS DEP 135.925
CUNC DEL 128.25
CPDLC 128.25
GN D CON 121.65 121.8 (EAST)
121.85 (WEST)
DFW TOWER 126.55 127.5 (EAST)
124.15 134.9 (WEST)
REGIONAL DEP CON 118.55 290.35



(NARRATIVE ON FOLLOWING PAGE)

NOTE: Chart not to scale.

SC-2, 05 SEP 2024 to 03 OCT 2024