

LOC/DME I-DJK 109.95 Chan 36 (Y)	APP CRS 022°	Rwy Idg 7026 TDZE 913 Apt Elev 913
--	------------------------	---

ILS or LOC RWY 2

DE KALB TAYLOR MUNI (DKB)

RADAR required for procedure entry. DME or RADAR required.

VDP NA with Aurora altimeter setting. When local altimeter setting not received, use Aurora altimeter setting and increase DA to 1174 feet and all MDA 80 feet; CETAN fix minimums increase Circling Cat C and D visibility 1/4 SM. For inop ALS, increase S-ILS 2 all Cats visibility to 3/8 SM. CETAN fix minimums: For inop ALS, increase S-LOC 2 Cat C and D visibility to 1 SM.

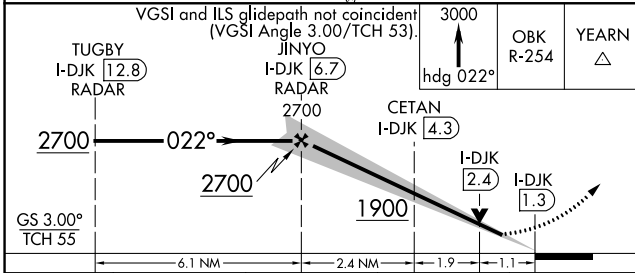
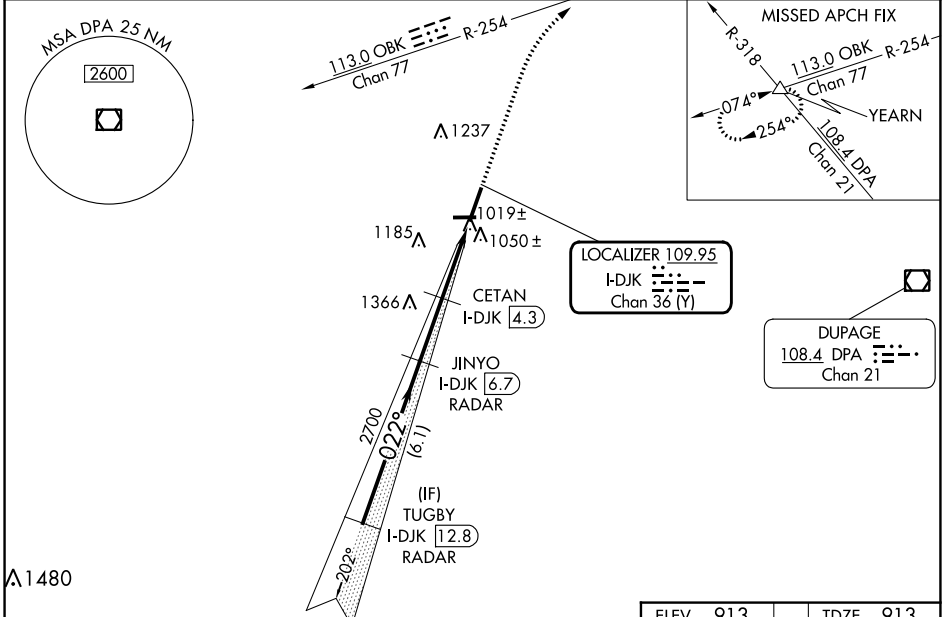
MALS

MISSED APPROACH:
Climb to 3000 on heading 022° and OBK VOR/DME R-254 to YEARN Int and hold.

AWOS-3
119.075

CHICAGO APP CON
133.5 349.0

UNICOM
122.7(CTAF) **0**



ELEV 913	TDZE 913
----------	----------

MIRL Rwys 2-20
MIRL Rwys 9-27
REIL Rwys 9, 20 and 27

4201 X 75

7026 X 100

022°

2

FAC to MAP 5.4 NM

Knots	60	90	120	150	180
Min:Seq	5:24	3:36	2:42	2:10	1:48

CATEGORY	A	B	C	D
S-ILS 2	1113-1/2		200 (200-1/2)	
S-LOC 2	1900-3/4 987 (1000-3/4)	1900-1 987 (1000-1)	1900-2 1/2	987 (1000-2 1/2)
CIRCLING	1900-1 1/4 987 (1000-1 1/4)	1900-1 1/2 987 (1000-1 1/2)	1900-3	987 (1000-3)
CETAN FIX MINIMUMS (DME REQUIRED)				
S-LOC 2	1280-1/2	367 (400-1/2)	1280-5/8	367 (400-5/8)
CIRCLING	1360-1 447 (500-1)	1500-1 587 (600-1)	1600-2 687 (700-2)	1740-2 3/4 827 (900-2 3/4)