

WAAS CH 58109 W02A	APP CRS 021°	Rwy Idg TDZE Apt Elev	7026 913 913
--	------------------------	-----------------------------	---

RNAV (GPS) RWY 2

DE KALB TAYLOR MUNI (DKB)

▼ Baro-VNAV NA when using Aurora altimeter setting. For uncompensated Baro-VNAV systems, LNAV/VNAV NA below -16°C (4°F) or above 47°C (116°F). DME/DME RNP-0.3 NA. VDP NA when using Aurora altimeter setting. When local altimeter setting not received, use Aurora altimeter setting and increase all DA 61 feet and all MDA 80 feet; increase all LPV and LNAV/VNAV visibilities, LNAV Cats C/D visibility, and Circling Cats C/D visibility ¼ mile. For inop MALSR, increase LPV all Cats visibility to 1.

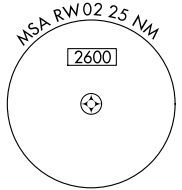
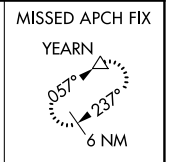
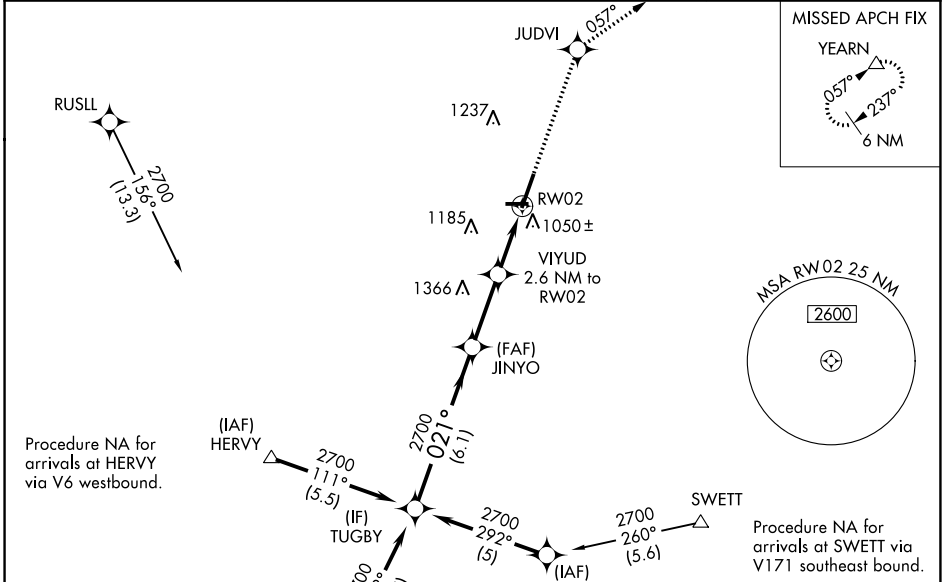
MALSR

MISSED APPROACH:
Climb to 3000 direct JUDVI and via 057° track to YEARN and hold.

AWOS-3
119.075

CHICAGO APP CON
133.5 349.0

UNICOM
122.7 (CTAF) 0

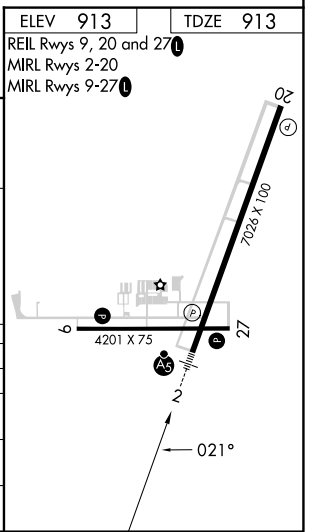


Procedure NA for arrivals at HERVY via V6 westbound.

Procedure NA for arrivals at SWETT via V171 southeast bound.

ELEV 913	TDZE 913
REIL Rwy 9, 20 and 27	
MIRL Rwy 2-20	
MIRL Rwy 9-27	

Procedure Turn NA	VGSI and RNAV glidepath not coincident (VGSI Angle 3.00/TCH 53).	3000	JUDVI	tr	YEARN
TUGBY	JINYO			057°	△
GP 3.00°					
TCH 55					
					*LNAV only.
CATEGORY	A	B	C	D	
LPV DA		1207-½	294 (300-½)		
LNAV/VNAV DA		1360-1	447 (500-1)		
LNAV MDA	1360-½	447 (500-½)	1360-¾ 447 (500-¾)	1360-1 447 (500-1)	
CIRCLING	1360-1 447 (500-1)	1500-1 587 (600-1)	1600-2 687 (700-2)	1740-2¾ 827 (900-2¾)	



EC-3, 05 SEP 2024 to 03 OCT 2024

EC-3, 05 SEP 2024 to 03 OCT 2024