

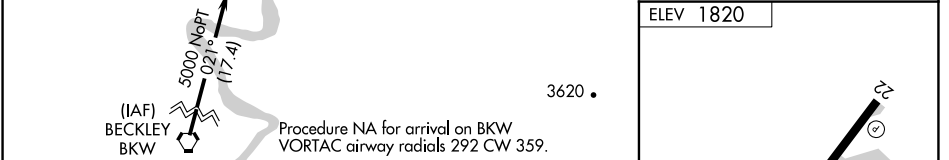
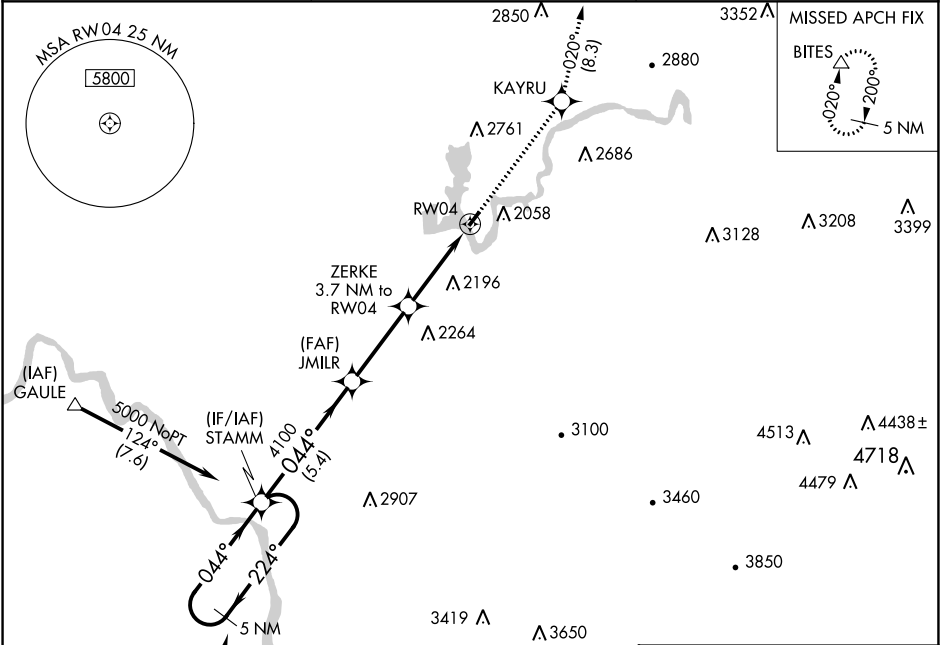
APP CRS	Rwy Idg	NA
044°	TDZE	NA
	Apt Elev	1820

RNAV (GPS)-A

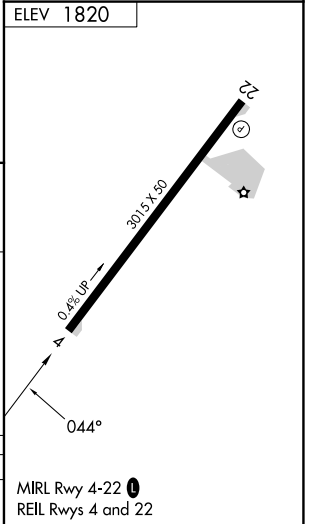
SUMMERSVILLE (SXL)

V Rwy 4, 22 helicopter visibility reduction below 1 SM NA. NA DME/DME RNP-0.3 NA. Procedure NA at night. Use Charleston altimeter setting.	MISSED APPROACH: Climb to 4500 direct KAYRU and on track 020° to BITES and hold.
---	--

CRW ASOS 127.6	CHARLESTON APP CON 119.2 269.125	UNICOM 122.8 (CTAF) 0
--------------------------	--	--



CATEGORY CIRCLING	A	B	C	D
	2640-1¼ 820 (900-1¼)	3020-1½ 1200 (1300-1½)	NA	



NE-4, 05 SEP 2024 to 03 OCT 2024

NE-4, 05 SEP 2024 to 03 OCT 2024