

VORTAC EIC 117.4 Chan 121	APP CRS 099°	Rwy ldg TDZE Apt Elev N/A N/A 278
--	------------------------	--

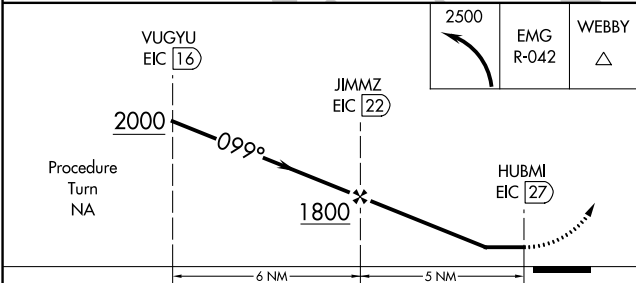
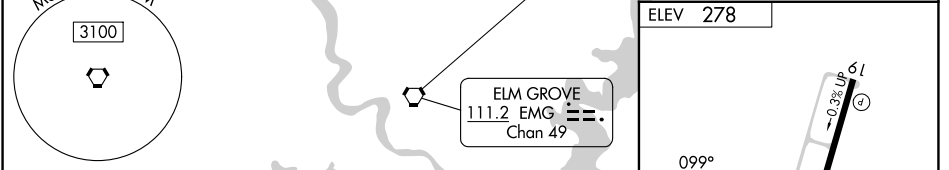
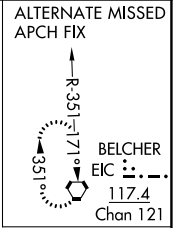
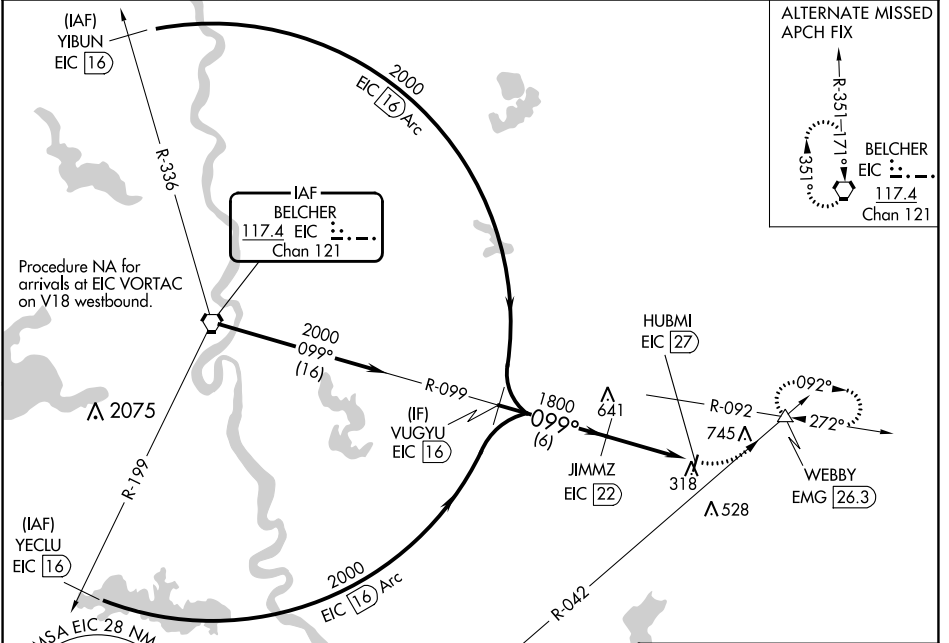
VOR/DME-A

MINDEN (MNE)

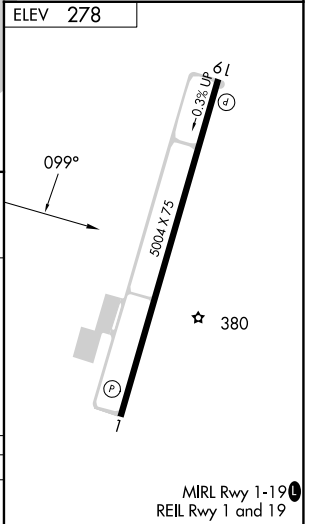
⚠ When VGSI inoperative, procedure NA at night. When local altimeter setting not received, use Barksdale AFB altimeter setting. Visibility reduction by helicopters NA.

⚠ MISSED APPROACH: Climbing left turn to 2500 and EMG VORTAC R-042 to WEBBY INT/EMG 26.3 DME and hold.

AWOS-3PT 119.325	SHREVEPORT APP CON 123.75 360.725	GCO 135.075	UNICOM 122.8 (CTAF) Ⓢ
----------------------------	---	-----------------------	--



CATEGORY	A	B	C	D
Ⓢ CIRCLING	1540-1¼ 1262 (1300-1¼)	1540-1½ 1262 (1300-1½)	1540-3	1262 (1300-3)



SC-4, 05 SEP 2024 to 03 OCT 2024

SC-4, 05 SEP 2024 to 03 OCT 2024