

(SOKOY3.SOKOY) 23334

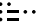
# SOKOY THREE DEPARTURE

AL-6094 (FAA)

NUT TREE (VCB)  
VACAVILLE, CALIFORNIA

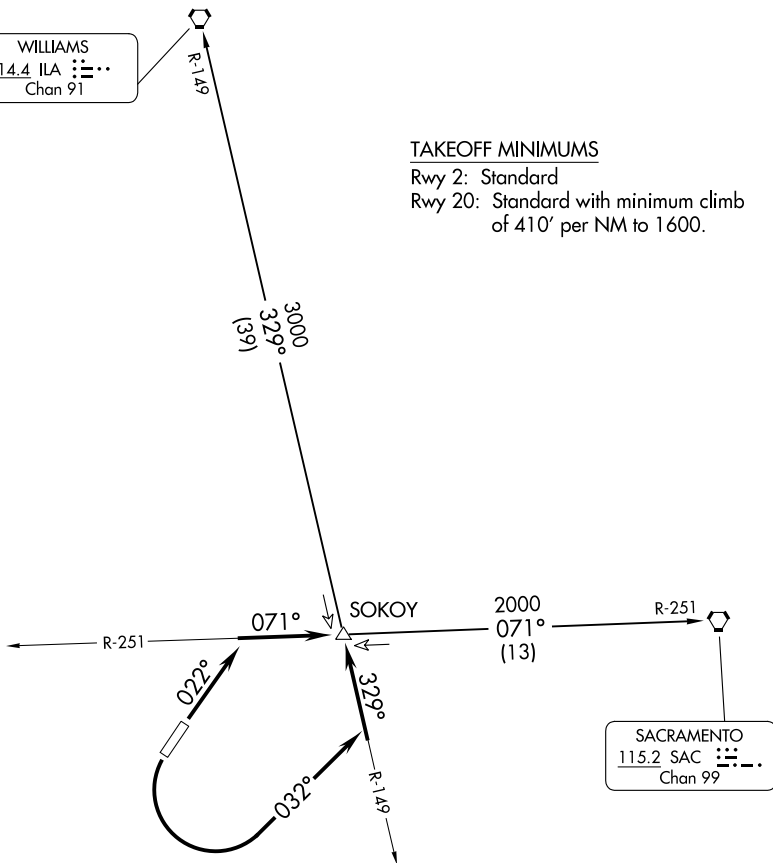
TRAVIS DEP CON  
128.4 281.45

**TOP ALTITUDE:  
ASSIGNED BY ATC**

WILLIAMS  
114.4 ILA   
Chan 91

### TAKEOFF MINIMUMS

Rwy 2: Standard  
Rwy 20: Standard with minimum climb  
of 410' per NM to 1600.



NOTE: Chart not to scale.

### DEPARTURE ROUTE DESCRIPTION

TAKEOFF RUNWAY 2: Climb via heading 022°, intercept SAC R-251 to SOKOY/  
SAC 13 DME.

TAKEOFF RUNWAY 20: Turn left heading 032°, intercept ILA R-149 to SOKOY/  
ILA 39 DME.

SACRAMENTO TRANSITION (SOKOY3.SAC): From over SOKOY on SAC R-251 to  
SAC VORTAC.

WILLIAMS TRANSITION (SOKOY3.ILA): From over SOKOY on ILA R-149 to  
ILA VORTAC.

# SOKOY THREE DEPARTURE

(SOKOY3.SOKOY) 17AUG17

VACAVILLE, CALIFORNIA  
NUT TREE (VCB)

SW-2, 05 SEP 2024 to 03 OCT 2024

SW-2, 05 SEP 2024 to 03 OCT 2024