

WAAS CH 82408 W17A	APP CRS 174°	Rwy Idg 5399
		TDZE 2013
		Apt Elev 2013

RNAV (GPS) RWY 17

ELK CITY RGNL BUSINESS (ELK)

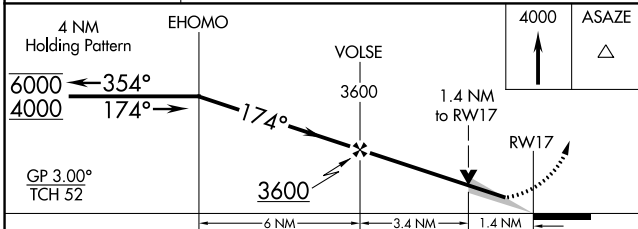
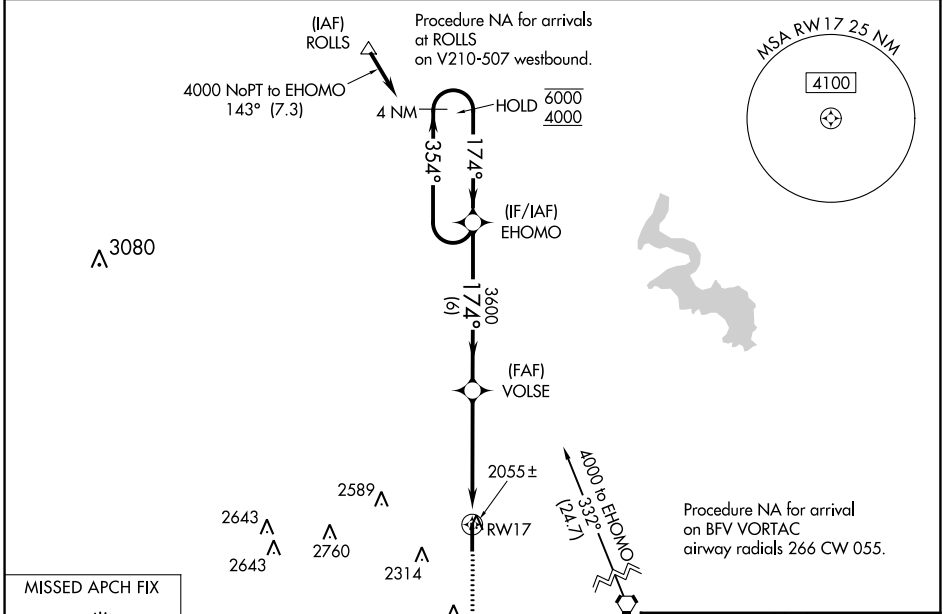
RNP APCH - GPS.

▽ For uncompensated Baro-VNAV systems, LNAV/VNAV NA below -18°C or above 54°C. Inop table does not apply to LPV all Cats and LNAV Cats C/D. For inop ALS increase LNAV/VNAV Cats A/B visibility to 7/5 SM.

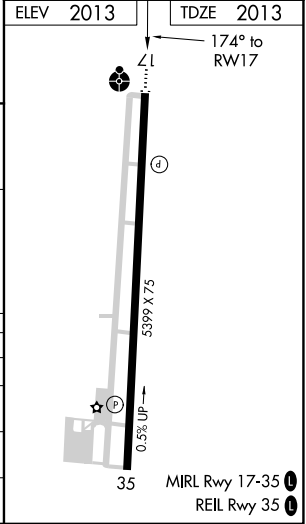
⚠ MISSED APPROACH: Climb to 4000 direct ASAZE and hold.

ODALS

AWOS-3 118,225	FORT WORTH CENTER 128.4 269.37	UNICOM 122.8 (CTAF) 0
--------------------------	--	---------------------------------



		6 NM	3.4 NM	1.4 NM	
CATEGORY	A	B	C	D	
LPV DA		2263-3/4	250 (300-3/4)		
LNAV/VNAV DA		2305-3/4	292 (300-3/4)		
LNAV MDA	2520-3/4	507 (600-3/4)	2520-13/8	507 (600-13/8)	
C CIRCLING	2520-1 507 (600-1)	2680-1 667 (700-1)	2680-13/4 667 (700-13/4)	2940-3 927 (1000-3)	



SC-1, 05 SEP 2024 to 03 OCT 2024

SC-1, 05 SEP 2024 to 03 OCT 2024