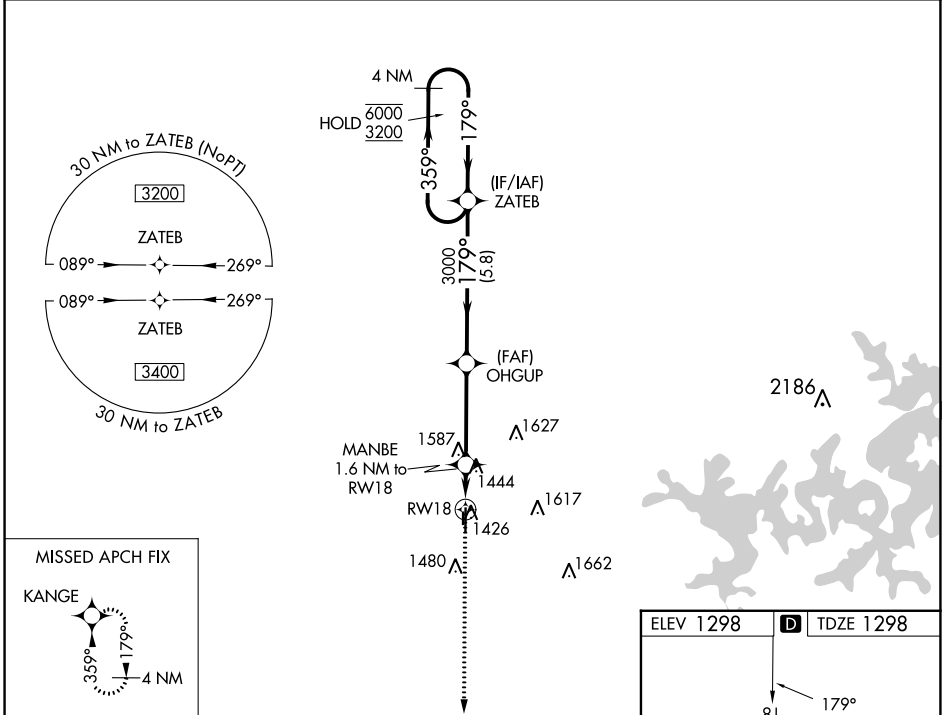


WAAS CH <b>77830</b> <b>W18A</b>	APP CRS <b>179°</b>	Rwy Idg TDZE Apt Elev	<b>4196</b> <b>1298</b> <b>1298</b>
--	------------------------	-----------------------------	---

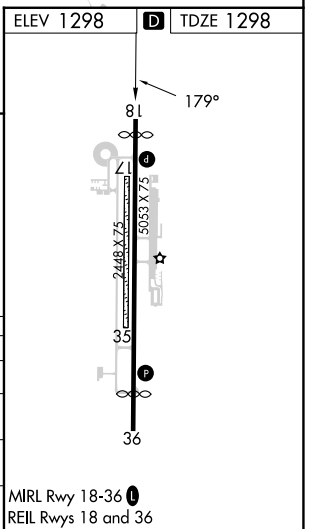
# RNAV (GPS) RWY 18

BENTONVILLE MUNI/LOUISE M THADEN FLD (VBT)

RNP APCH.		MISSED APPROACH: Climb to 3400 direct KANGE and hold.	
<p><b>⚠</b> Circling NA to Rwy 17 and 35. Rwy 18 helicopter visibility reduction below 3/4 SM NA. For uncompensated Baro-VNAV systems, LNAV/VNAV NA below -17°C or above 54°C.</p>			
AWOS-3PT <b>134.975</b>	RAZORBACK APP CON ★ <b>121.0 (WEST) 244.575</b>	CLNC DEL <b>121.05 263.125</b>	UNICOM <b>122.975 (CTAF) 1</b>



3400	KANGE				
*LNAV only.	MANBE 1.6 NM to RWY 18	OHGUP 3000	ZATEB	4 NM Holding Pattern	
	1900*	3000		6000	3200
	1.6 NM	3.6 NM	5.8 NM	GP 3.00° TCH 45	
CATEGORY	A	B	C	D	
LPV DA	1548-1		250 (300-1)		
LNAV/VNAV DA	1688-1 1/8		390 (400-1 1/8)		
LNAV MDA	1700-1 402 (500-1)		1700-1 1/8 402 (500-1 1/8)		
<b>C</b> CIRCLING	1780-1 482 (500-1)		1920-1 3/4 622 (700-1 3/4)		1940-2 642 (700-2)



SC-1, 05 SEP 2024 to 03 OCT 2024

SC-1, 05 SEP 2024 to 03 OCT 2024