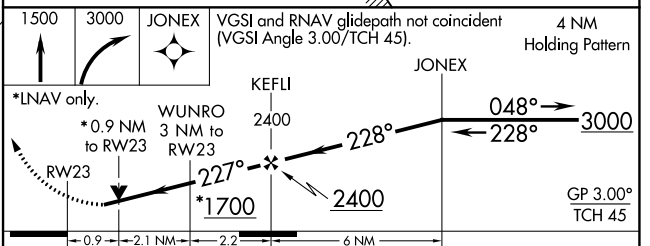
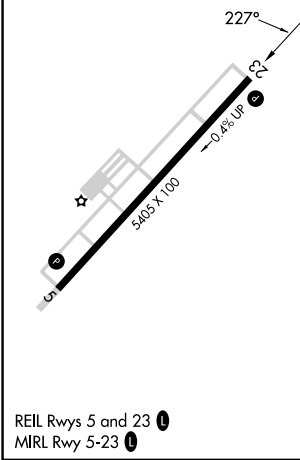
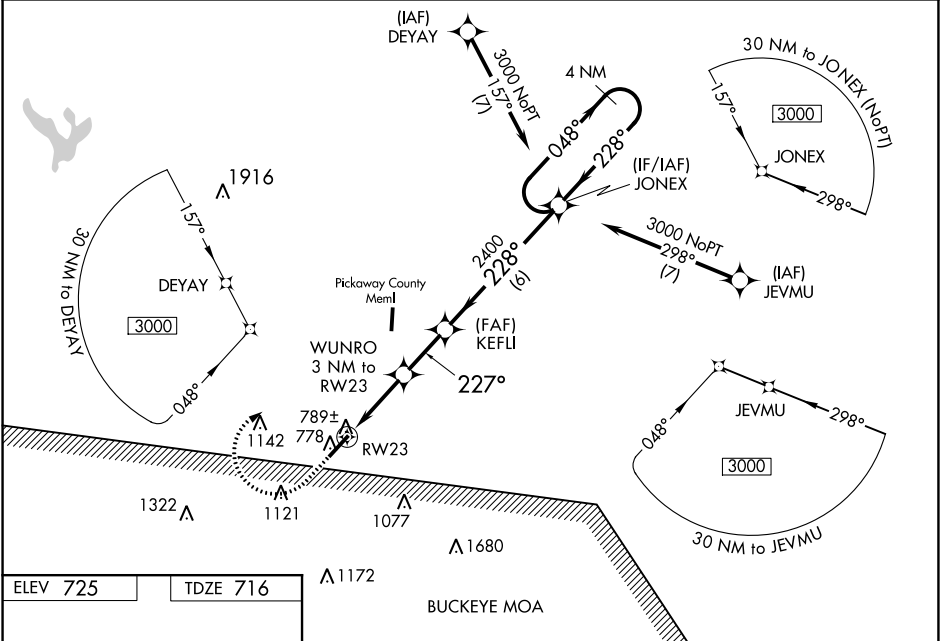


WAAS CH 69329 W23A	APP CRS 227°	Rwy Idg TDZE Apt Elev	5405 716 725
--	------------------------	-----------------------------	---

RNAV (GPS) RWY 23

ROSS COUNTY (R/ZT)

RNP APCH - GPS.			MISSED APPROACH: Climb to 1500 then climbing right turn to 3000 direct JONEX and hold.
For uncompensated Baro-VNAV systems, LNAV/VNAV NA below -16°C or above 54°C. When local altimeter setting not received, use Rickenbacker Intl altimeter setting and increase all DA/MDA 60 feet, increase LPV all Cats, LNAV/VNAV all Cats and LNAV Cat C and D and Circling Cat C visibility ¼ mile. Baro-VNAV and VDP NA when using Rickenbacker Intl altimeter setting. Rwy 23 helicopter visibility reduction below ¾ SM NA.			
AWOS-3 119.225	COLUMBUS APP CON 134.0 279.6	UNICOM 122.8 (CTAF)	123.0



CATEGORY	A	B	C	D
LPV DA		966-¾	250 (300-¾)	
LNAV/VNAV DA		1088-1¼	372 (400-1¼)	
LNAV MDA		1040-1	324 (400-1)	
CIRCLING	1320-1	1380-1	1500-2¼	1540-2¾
	595 (600-1)	655 (700-1)	775 (800-2¼)	815 (900-2¾)

EC-2, 05 SEP 2024 to 03 OCT 2024

EC-2, 05 SEP 2024 to 03 OCT 2024