

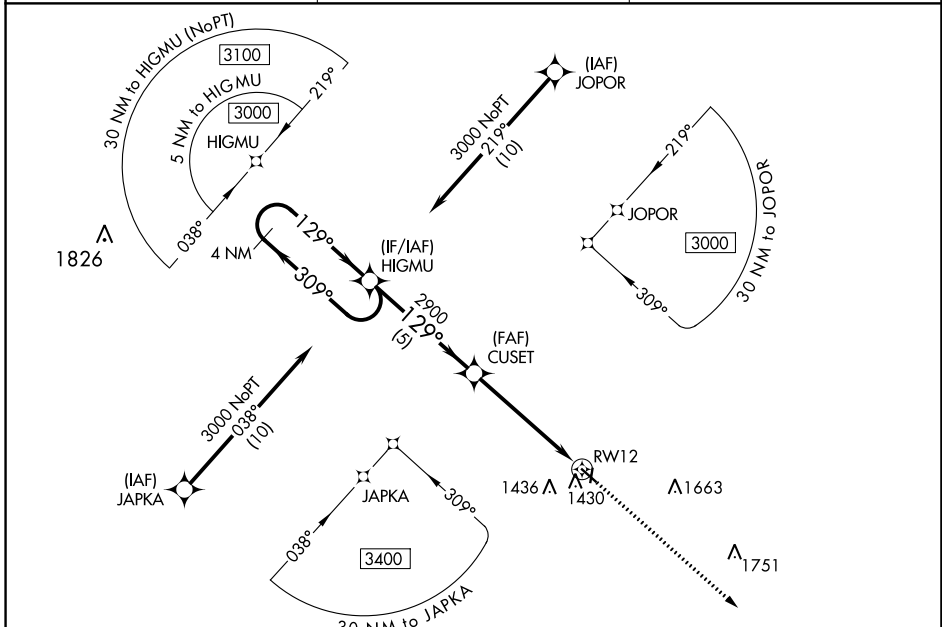
APP CRS	Rwy Idg	3960
129°	TDZE	1215
	Apt Elev	1216

RNAV (GPS) RWY 12

ALGONA MUNI (AXA)

RNP APCH.	<p>When local altimeter setting not received, use Forest City altimeter setting and increase all MDA 80 feet. Procedure NA at night. Rwy 12 helicopter visibility reduction below 1 SM NA.</p>	<p>MISSED APPROACH: Climb to 3000 direct IFOLA and hold.</p>
<p>▽ When local altimeter setting not received, use Forest City altimeter setting and increase all MDA 80 feet. Procedure NA at night. Rwy 12 helicopter visibility reduction below 1 SM NA.</p> <p>▲</p>		

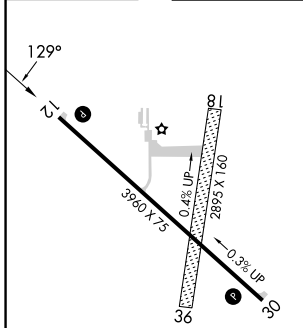
AWOS-3 118.475	MINNEAPOLIS CENTER 134.0 288.3	UNICOM 122.8 (CTAF) 0
--------------------------	--	---------------------------------



NC-3, 05 SEP 2024 to 03 OCT 2024

NC-3, 05 SEP 2024 to 03 OCT 2024

ELEV 1216	TDZE 1215
-----------	-----------



4 NM Holding Pattern	HIGMU	CUSET	RWY 12	IFOLA
3000	309°	129°	2900	3000
	129°		3.00 NM TCH 40	
	5 NM	5.2 NM		
CATEGORY	A	B	C	D
LNAV MDA	1680-1	465 (500-1)		NA

MIRL Rwy 12-30 **0**
 REIL Rwy 12 and 30 **0**

ALGONA, IOWA
 Orig-E 07NOV19

43°05'N-94°16'W

ALGONA MUNI (AXA) RNAV (GPS) RWY 12