

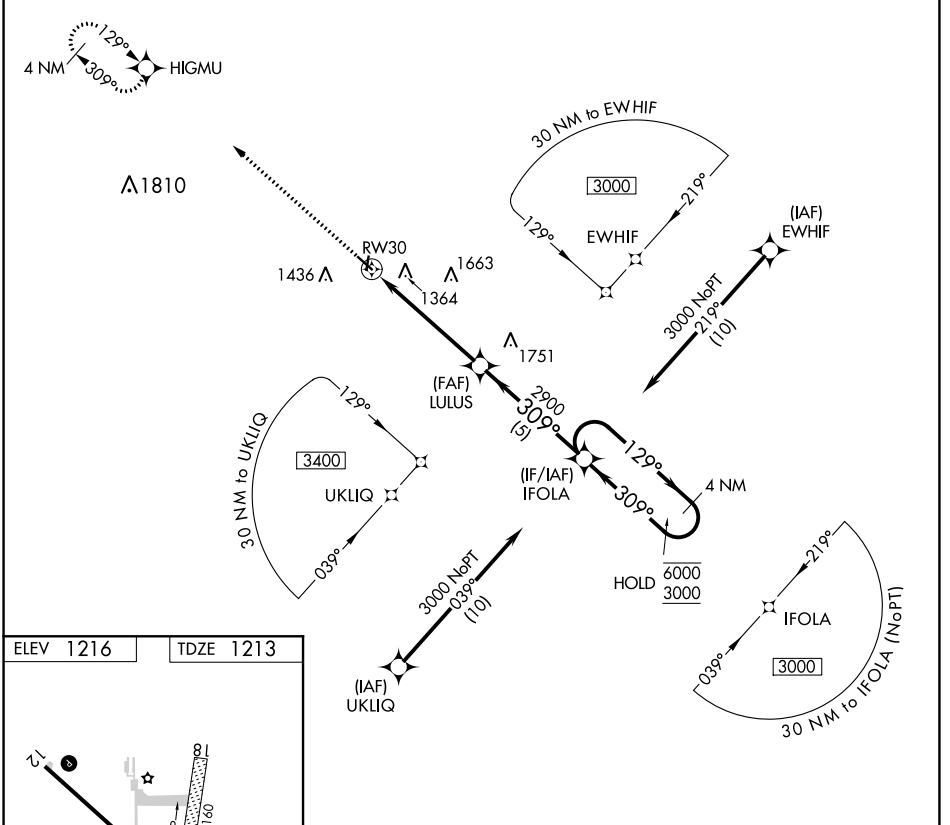
APP CRS	Rwy Idg	3960
309°	TDZE	1213
	Apt Elev	1216

RNAV (GPS) RWY 30

ALGONA MUNI (A.X.A)

RNP APCH.	MISSED APPROACH: Climb to 3000 direct HIGMU and hold.
▼ Rwy 30 helicopter visibility reduction below 3/4 SM NA.	

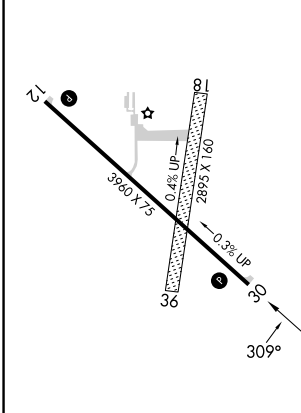
AWOS-3 118.475	MINNEAPOLIS CENTER 134.0 288.3	UNICOM 122.8 (CTAF) 0
--------------------------	--	---------------------------------



NC-3, 05 SEP 2024 to 03 OCT 2024

NC-3, 05 SEP 2024 to 03 OCT 2024

ELEV	1216	TDZE	1213
------	------	------	------



MIRL Rwy 12-30 0
REIL Rwy 12 and 30 0

3000 HIGMU	IFOLA 4 NM Holding Pattern
LULUS 2900	6000 / 3000
1.1 NM to RW30	129° / 309°
≤ 3.00° TCH 40	5 NM
CATEGORY	A B C D
LNAV MDA	1600-1 387 (400-1) NA