

WAAS CH <b>72635</b> <b>W08A</b>	APP CRS <b>079°</b>	Rwy Idg TDZE <b>698</b> Apt Elev <b>698</b>	<b>4051</b>
--	------------------------	---	-------------

# RNAV (GPS) RWY 8

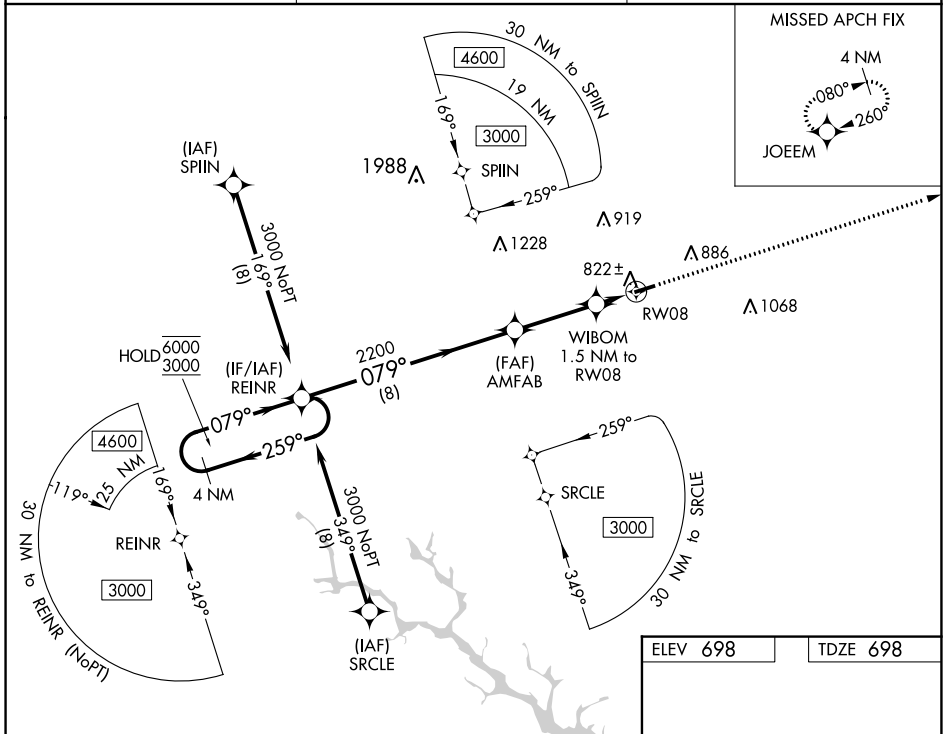
LAURENS COUNTY (LUX)

RNP APCH-GPS.

▼ Rwy 8 helicopter visibility reduction below 3/4 SM NA.  
For uncompensated Baro-VNAV systems, LNAV/VNAV NA below -16°C or above 54°C.

MISSED APPROACH: Climb to 3000 direct JOEEM and hold.

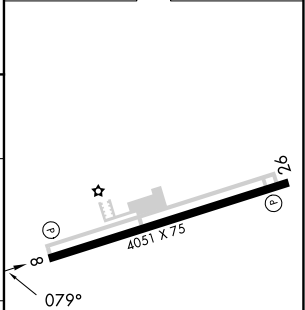
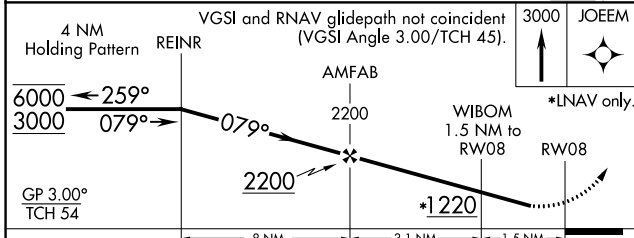
AWOS-3 <b>123.975</b>	GREER APP CON ★ <b>120.6 350.2</b>	UNICOM <b>122.8 (CTAF) 0</b>
--------------------------	---------------------------------------	---------------------------------



SE-2, 05 SEP 2024 to 03 OCT 2024

SE-2, 05 SEP 2024 to 03 OCT 2024

ELEV 698	TDZE 698
----------	----------



CATEGORY	A	B	C	D
LPV DA	948-3/4	250 (300-3/4)		NA
LNAV/VNAV DA	957-3/4	259 (300-3/4)		NA
LNAV MDA	1080-1	382 (400-1)		NA
<b>C</b> CIRCLING	1200-1	502 (600-1)		NA

REIL Rwys 8 and 26 0  
MIRL Rwy 8-26 0