

WAAS Ch 42817 W23A	APP CRS 228°	Rwy Idg 5002 TDZE 1013 Apt Elev 1013
--	------------------------	---

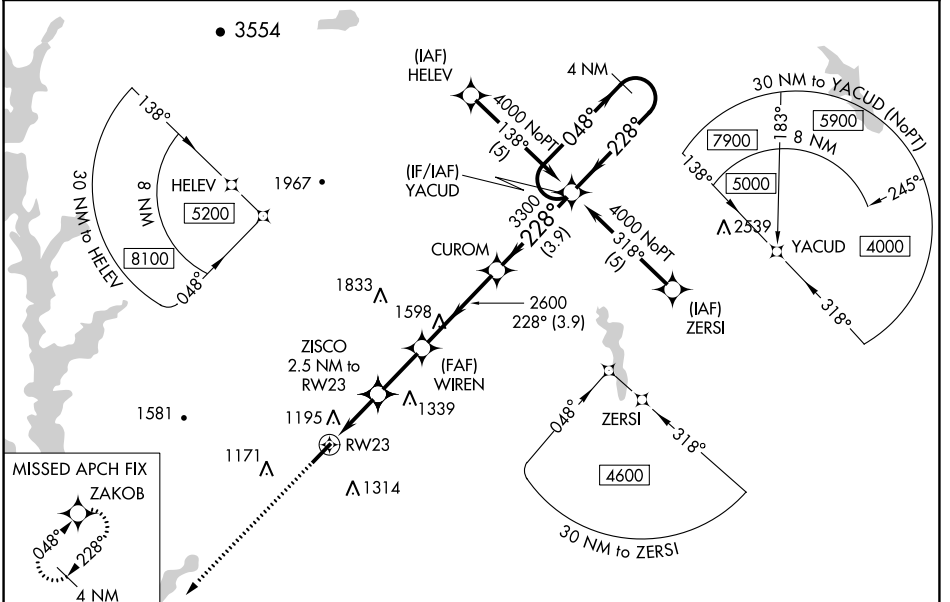
RNAV (GPS) RWY 23

PICKENS COUNTY (L,Q,K)

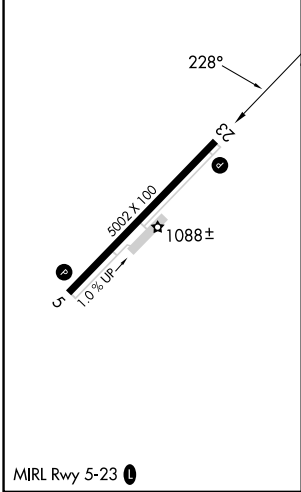
For uncompensated Baro-VNAV systems, LNAV/VNAV NA below -17°C (2°F) or above 46°C (114°F). DME/DME RNP-0.3 NA. When local altimeter setting not received, use Clemson altimeter setting and increase LPV DA to 1356 feet and visibility all Cats ¼ SM; increase LNAV/VNAV DA to 1594 feet; increase all MDAs 60 feet and LNAV Cat C and Circling Cat D visibility ½ SM, increase LNAV Cat D visibility ½ SM. Baro-VNAV NA when using Clemson altimeter setting. VDP NA with Clemson altimeter setting.

MISSED APPROACH: Climb to 3000 direct ZAKOB and hold.

AWOS-3 120.0	GREER APP CON * 118.8 270.275	UNICOM 122.8 (CTAF) 0
------------------------	---	---------------------------------



ELEV 1013	TDZE 1013
-----------	-----------



3000	ZAKOB	VGSI and RNAV glidepath not coincident (VGSI Angle 3.00/TCH 26).		4 NM Holding Pattern												
*LNAV only.																
<table border="1"> <tr> <td>RW23</td> <td>ZISCO 2.5 NM to RW23</td> <td>WIREN 2600</td> <td>CUROM</td> <td>YACUD</td> <td>4000</td> </tr> <tr> <td>1.5 NM</td> <td>1 NM</td> <td>2.3 NM</td> <td>3.9 NM</td> <td>3.9 NM</td> <td></td> </tr> </table>					RW23	ZISCO 2.5 NM to RW23	WIREN 2600	CUROM	YACUD	4000	1.5 NM	1 NM	2.3 NM	3.9 NM	3.9 NM	
RW23	ZISCO 2.5 NM to RW23	WIREN 2600	CUROM	YACUD	4000											
1.5 NM	1 NM	2.3 NM	3.9 NM	3.9 NM												
CATEGORY	A	B	C	D												
LPV DA	1310-1		297 (300-1)													
LNAV/VNAV DA	1548-2		535 (600-2)													
LNAV MDA	1500-1	487 (500-1)	1500-1½ 487 (500-1½)	1500-1½ 487 (500-1½)												
CIRCLING	1560-1 547 (600-1)	1620-1 607 (700-1)	1620-1¾ 607 (700-1¾)	1780-2½ 767 (800-2½)												

SE-2, 05 SEP 2024 to 03 OCT 2024

SE-2, 05 SEP 2024 to 03 OCT 2024