

(CHATT6.CHATT) 23166

AL-6201 (FAA)

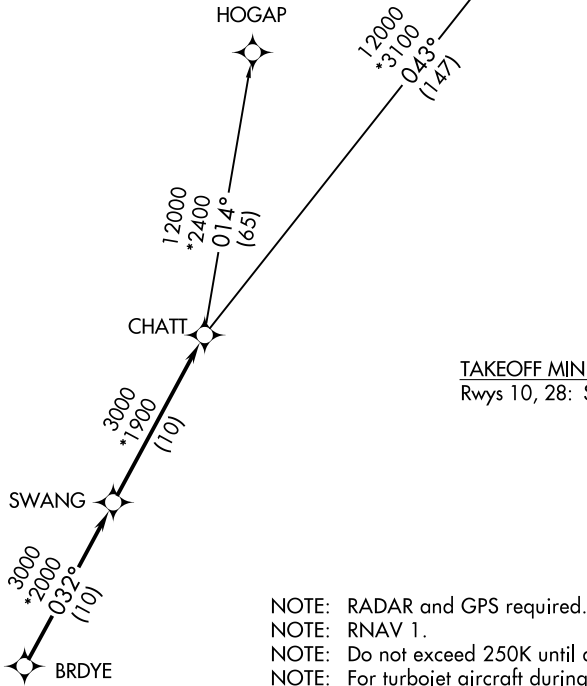
THOMSON-McDUFFIE COUNTY (HQU)
THOMSON, GEORGIA

CHATT SIX DEPARTURE (RNAV)

AUGUSTA DEP CON ★
124.45 270.3
CTAF
122.8
AWOS-3
120.625

GREENSBORO
GSO

**TOP ALTITUDE:
ASSIGNED BY ATC**



TAKEOFF MINIMUMS:
Rwys 10, 28: Standard.

- NOTE: RADAR and GPS required.
- NOTE: RNAV 1.
- NOTE: Do not exceed 250K until advised by ATC.
- NOTE: For turbojet aircraft during Masters golf tournament week.

NOTE: Chart not to scale.



DEPARTURE ROUTE DESCRIPTION

TAKEOFF RUNWAY 10, 28: Climb on assigned heading for RADAR vectors to BRDYE, then on depicted route to CHATT, thence. . . .

. . . .maintain altitude assigned by ATC. Expect clearance to filed altitude/flight level within 10 minutes after departure.

GREENSBORO TRANSITION (CHATT6.GSO)
HOGAP TRANSITION (CHATT6.HOGAP)

CHATT SIX DEPARTURE (RNAV)

(CHATT6.CHATT) 29MAR18

THOMSON, GEORGIA
THOMSON-McDUFFIE COUNTY (HQU)

SE-4, 05 SEP 2024 to 03 OCT 2024

SE-4, 05 SEP 2024 to 03 OCT 2024