

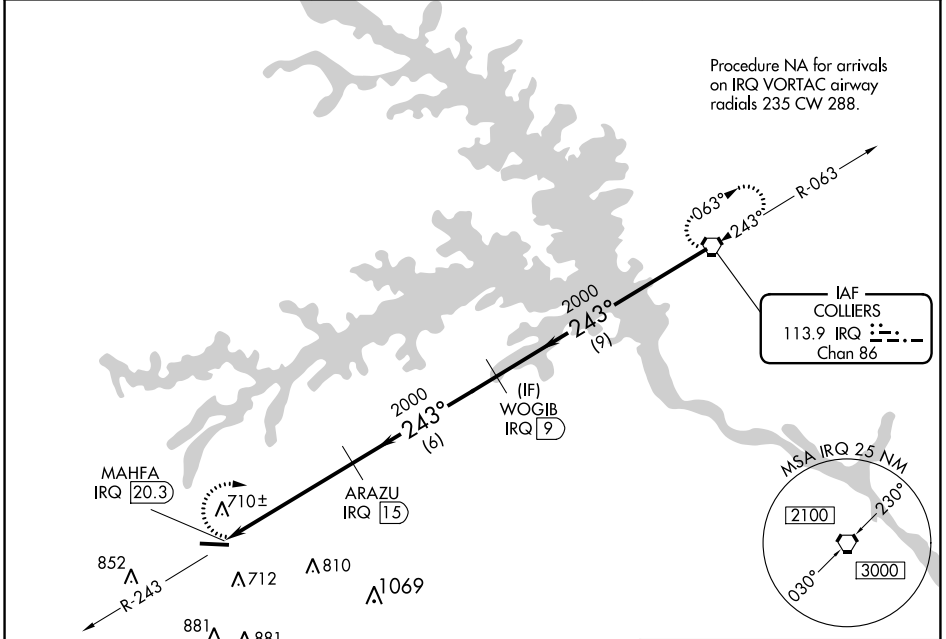
VORTAC IRQ <b>113.9</b> Chan <b>86</b>	APP CRS <b>243°</b>	Rwy Idg TDZE Apt Elev	<b>N/A</b> <b>N/A</b> <b>501</b>
--	------------------------	-----------------------------	--

**VOR/DME-A**  
THOMSON-McDUFFIE COUNTY (HQU)

**▼** Visibility reduction by helicopters NA. When local altimeter setting not received, use Daniel Field altimeter setting and increase all MDAs 80 feet and visibility Cat C ¼ SM and Cat D ½ SM.

**▲** MISSED APPROACH: Climbing right turn to 2400 direct IRQ VORTAC and hold.

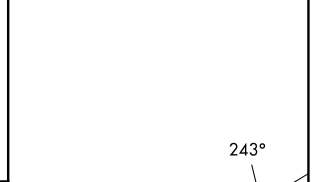
AWOS-3 <b>120.625</b>	AUGUSTA APP CON * <b>124.45 270.3</b>	UNICOM <b>122.8</b> (CTAF) <b>①</b>
--------------------------	--	--



SE-4, 05 SEP 2024 to 03 OCT 2024

SE-4, 05 SEP 2024 to 03 OCT 2024

ELEV 501 **D**



2400	IRQ			
		ARAZU IRQ 15	WOGIB IRQ 9	IRQ VORTAC
		2000	2000	2000
		5.3 NM	6 NM	9 NM

CATEGORY	A	B	C	D
CIRCLING	1060-1 559 (600-1)	1080-1¼ 579 (600-1¼)	1160-1¾ 659 (700-1¾)	1240-2¼ 739 (800-2¼)

HIRL Rwy 10-28 **①**