

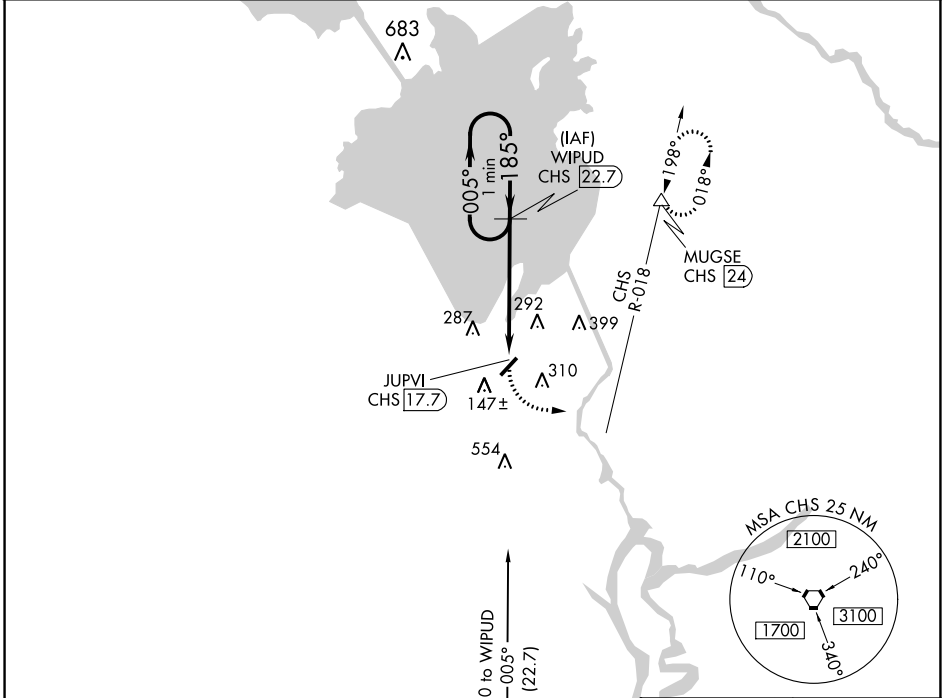
VORTAC CHS 113.5 Chan 82	APP CRS 185°	Rwy Idg TDZE Apt Elev	N/A N/A 74
--	------------------------	-----------------------------	---------------------------------------

VOR/DME-A
BERKELEY COUNTY (MKS)

NA Procedure NA at night. When local altimeter setting not received, use Charleston AFB/Intl altimeter setting: increase all MDA 60 feet and Cat C/D visibility ¼ SM. Helicopter visibility reduction below 1 SM NA.

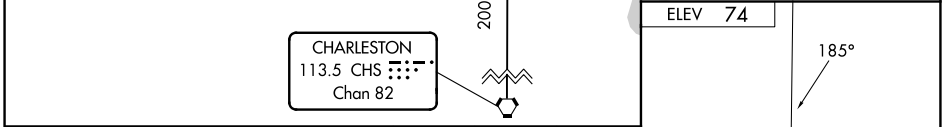
MISSED APPROACH: Climbing left turn to 2000 via heading 050° and CHS R-018 to MUGSE/CHS 24 DME and hold.

AWOS-3 119.175	CHARLESTON APP CON 121.275 379.925	UNICOM 123.05 (CTAF)
--------------------------	--	--------------------------------

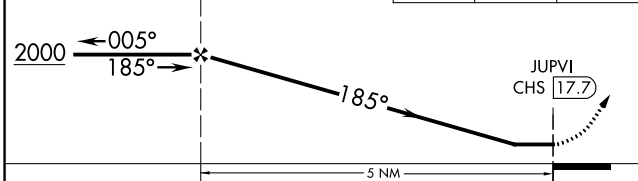


SE-2, 05 SEP 2024 to 03 OCT 2024

SE-2, 05 SEP 2024 to 03 OCT 2024



One Minute Holding Pattern	WIPUD CHS 22.7	2000	CHS R-018	MUGSE
		hdg 050°		△



CATEGORY	A	B	C	D
CIRCLING	640-1	566 (600-1)	700-1¼ 626 (700-1¼)	860-2½ 786 (800-2½)

