

WAAS CH 77715 W03A	APP CRS 025°	Rwy Idg 5350 TDZE 198 Apt Elev 198
--	------------------------	---

RNAV (GPS) RWY 3

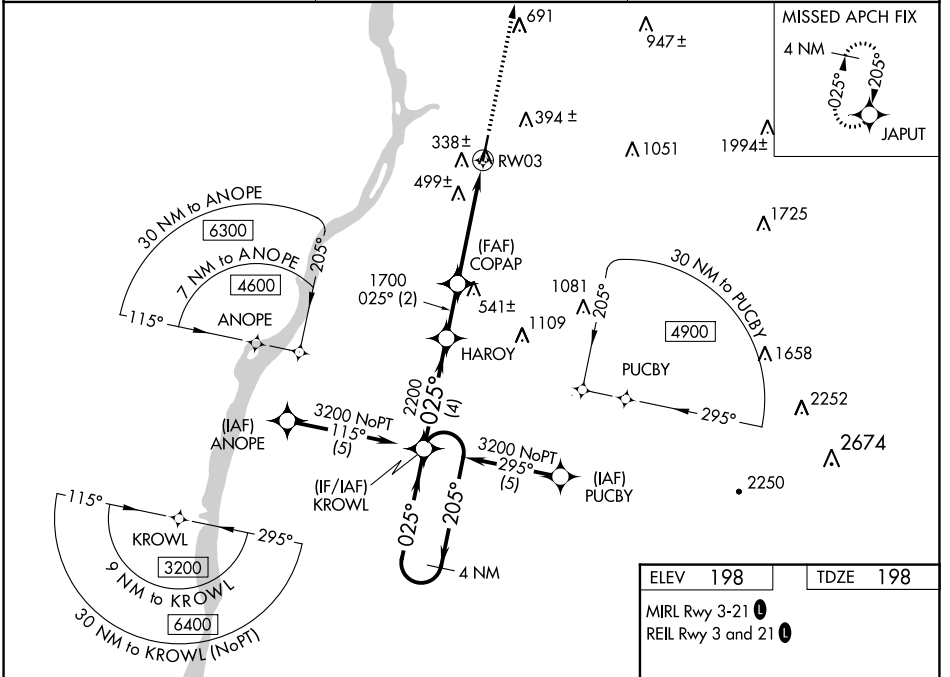
COLUMBIA COUNTY (1B1)

RNP APCH.

NA Baro-VNAV NA when using Albany altimeter setting. For uncompensated Baro-VNAV systems, LNAV/VNAV NA below -15°C (5°F) or above 48°C (118°F). Rwy 3 helicopter visibility reduction below ¾ SM NA. When local altimeter setting not received, use Albany altimeter setting and increase all DA 76 feet and MDA 80 feet, increase LPV all Cats, LNAV/VNAV all Cats, LNAV Cats C/D visibility ¼ mile.

MISSED APPROACH: Climb to 3200 direct JAPUT and hold. continue climb-in-hold to 3200.

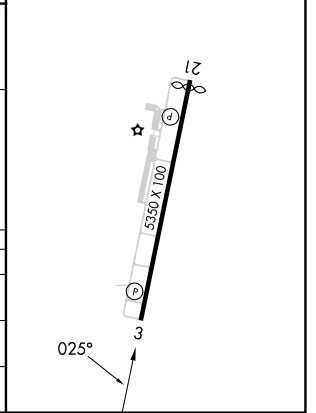
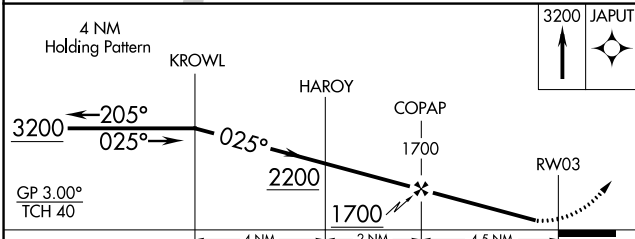
AWOS-3 133.525	ALBANY APP CON 132.825 307.2	UNICOM 123.05 (CTAF)
--------------------------	--	--------------------------------



NE-2, 05 SEP 2024 to 03 OCT 2024

NE-2, 05 SEP 2024 to 03 OCT 2024

ELEV 198	TDZE 198
MIRL Rwy 3-21	REIL Rwy 3 and 21



CATEGORY	A	B	C	D
LPV DA	500-1 302 (400-1)			
LNAV/VNAV DA	842-2¼ 644 (700-2¼)			
LNAV MDA	760-1 562 (600-1)	760-1½ 562 (600-1½)		760-1¾ 562 (600-1¾)