

|  |                        |                             |   |
|--|------------------------|-----------------------------|---|
| WAAS<br>CH <b>69628</b><br><b>W28A</b> | APP CRS<br><b>280°</b> | Rwy Idg<br>TDZE<br>Apt Elev | <b>5003</b><br><b>868</b><br><b>868</b> |
|--|------------------------|-----------------------------|---|

# RNAV (GPS) RWY 28

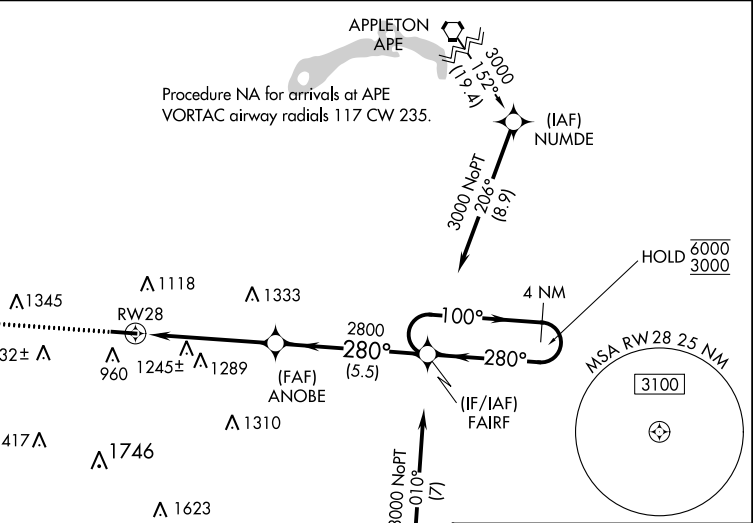
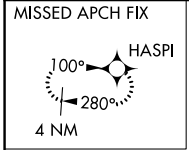
FAIRFIELD COUNTY (L.H.Q)

RNP APCH - GPS.

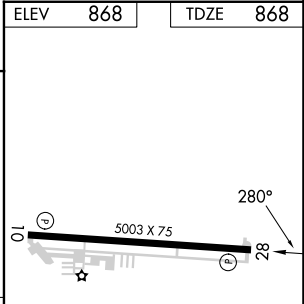
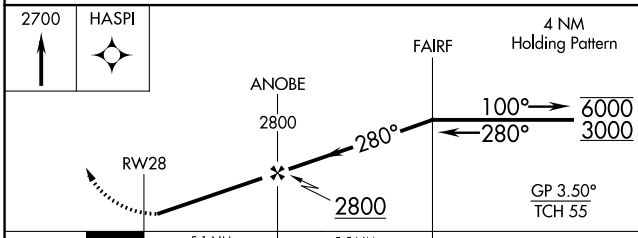
**⚠** Rwy 28 helicopter visibility reduction below 1 SM NA. For uncompensated Baro-VNAV systems, LNAV/VNAV NA below -20°C or above 54°C. Baro-VNAV NA when using Rickenbacker Intl altimeter setting. When local altimeter setting not received, use Rickenbacker Intl altimeter setting; increase LPV DA to 1411 feet and all visibilities ¼ SM; increase LNAV/VNAV DA to 1549 feet and all visibilities ¼ SM; increase all MDAs 60 feet. Straight-in Rwy 28 at night, operational VGSI required, remain on or above VGSI glidepath until threshold. When Circling Rwy 28 at night, operational VGSI required, remain on or above VGSI glidepath until threshold.

**MISSED APPROACH:**  
Climb to 2700 direct HASPI and hold.

|                        |  |                           |                                   |
|------------------------|--|---------------------------|-----------------------------------|
| ASOS<br><b>118.375</b> | COLUMBUS APP CON<br><b>134.0 279.6</b> | CLNC DEL<br><b>121.65</b> | UNICOM<br><b>122.725 (CTAF) 0</b> |
|------------------------|--|---------------------------|-----------------------------------|



|      |     |      |     |
|------|-----|------|-----|
| ELEV | 868 | TDZE | 868 |
|------|-----|------|-----|



| CATEGORY     | A                     | B                     | C | D  |
|--------------|-----------------------|-----------------------|---|----|
| LPV DA       | 1362-1 3/8            | 494 (500-1 3/8)       |   | NA |
| LNAV/VNAV DA | 1500-1 3/4            | 632 (700-1 3/4)       |   | NA |
| LNAV MDA     | 1500-1                | 632 (700-1)           |   | NA |
| CIRCLING     | 1500-1<br>632 (700-1) | 1540-1<br>672 (700-1) |   | NA |

REIL Rwy 10 and 28 0

MIRL Rwy 10-28 0