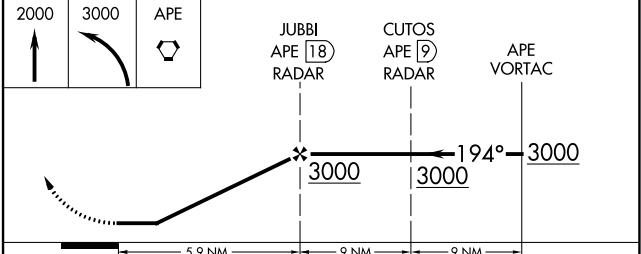
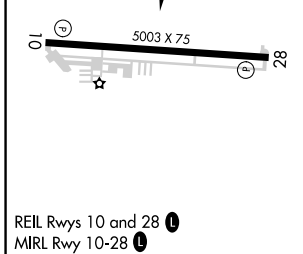
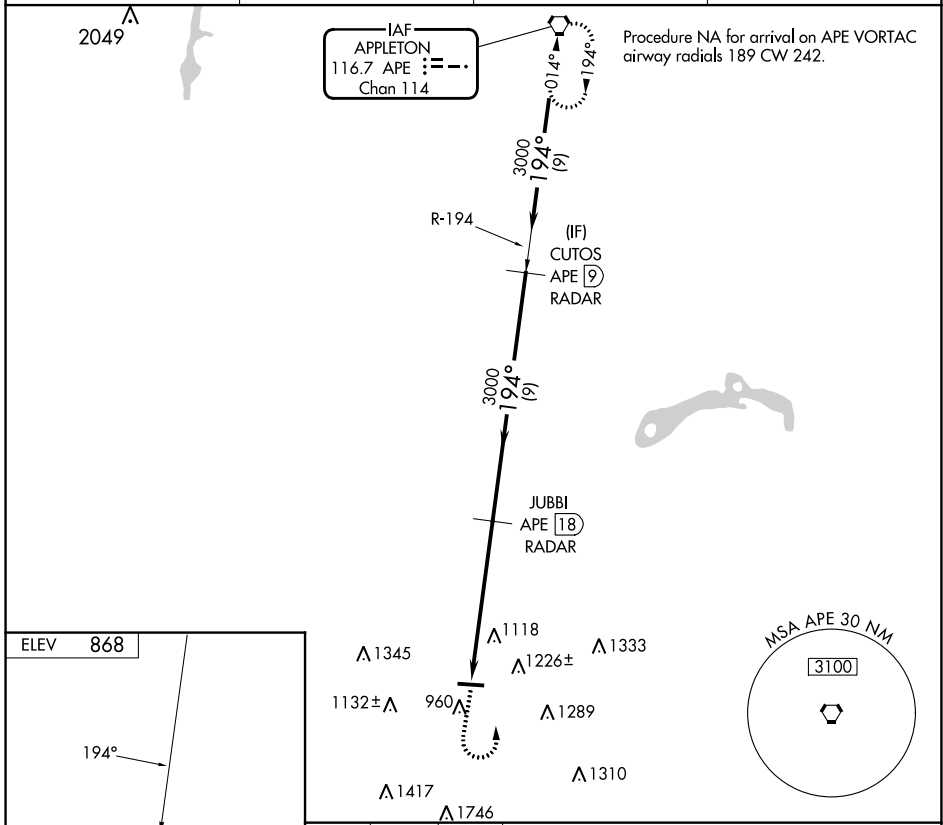


VORTAC APE <b>116.7</b> Chan <b>114</b>	APP CRS <b>194°</b>	Rwy Idg TDZE Apt Elev <b>N/A</b> <b>N/A</b> <b>868</b>
---	------------------------	---

**VOR-A**  
FAIRFIELD COUNTY (L.H.Q.)

DME or RADAR required.	MISSED APPROACH: Climb to 2000 then climbing left turn to 3000 direct APE VORTAC and hold.
<p>▼ When local altimeter setting not received, use Rickenbacker Intl altimeter setting and increase all MDAs 60 feet and visibility Cat C ¼ SM. Circling Rwy 28 NA at night. Rwy 28 helicopter visibility reduction below 1 SM NA.</p>	

ASOS <b>118.375</b>	COLUMBUS APP CON <b>134.0 279.6</b>	CLNC DEL <b>121.65</b>	UNICOM <b>122.725</b> (CTAF) <b>1</b>
------------------------	--	---------------------------	--



FAF to MAP 5.9 NM				
CATEGORY	A	B	C	D
CIRCLING	1500-1 632 (700-1)	1540-1 672 (700-1)	1620-2¼ 752 (800-2¼)	NA
Knots	60	90	120	150
Min:Sec	5:54	3:56	2:57	2:22
	180		1:58	

EC-2, 05 SEP 2024 to 03 OCT 2024

EC-2, 05 SEP 2024 to 03 OCT 2024