

APP CRS	Rwy Idg	2812
218°	TDZE	538
	Apt Elev	538

RNAV (GPS) RWY 22

MALVERN MUNI (M78)

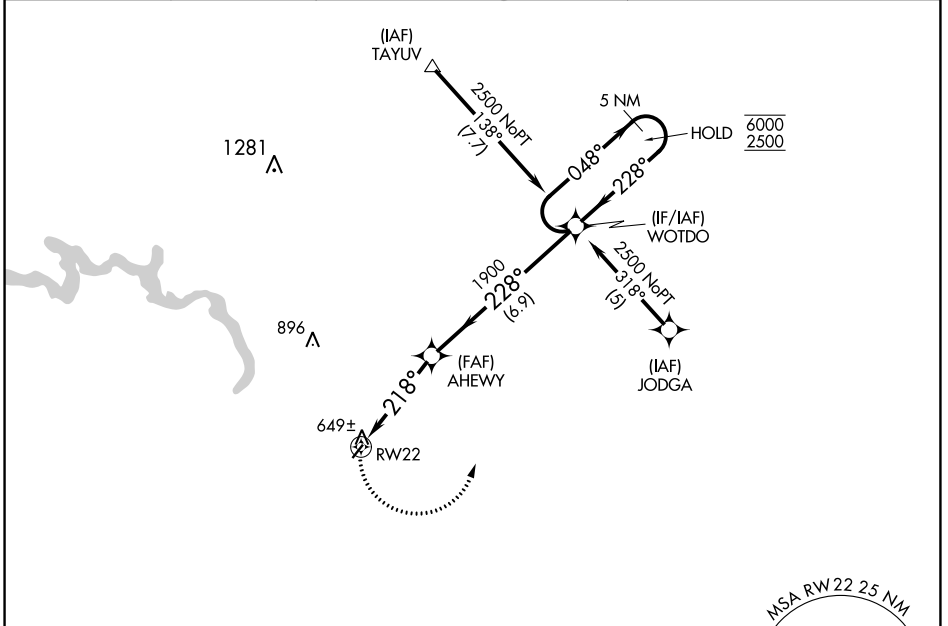
RNP APCH - GPS.

▼ Rwy 22 helicopter visibility reduction below 1 SM NA. Use Hot Springs altimeter setting; when not received use Bill and Hillary Clinton Nil/Adams Fld altimeter setting and increase all MDAs 80 feet. Procedure NA at night.

▲ NA

MISSED APPROACH: Climbing left turn to 2500 direct WOTDO and hold.

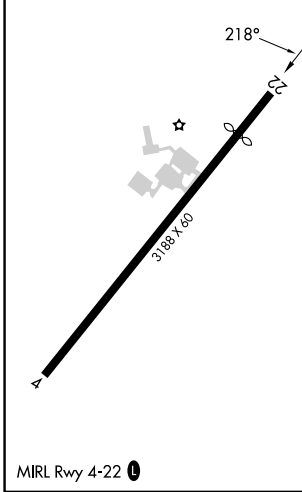
HOT ASOS 119.925	MEMPHIS CENTER 128.475 377.15	UNICOM 122.8(CTAF) 0
----------------------------	---	--------------------------------



SC-1, 05 SEP 2024 to 03 OCT 2024

SC-1, 05 SEP 2024 to 03 OCT 2024

ELEV 538	TDZE 538
----------	----------



2500 WOTDO

Visual Segment - Obstacles.

5 NM Holding Pattern

Profile view details: RWY 22, 218°, 4.1 NM, AHEWY, 1900, 6.9 NM, WOTDO, 048°, 6000, 228°, 2500.

CATEGORY	A	B	C	D
LNAV MDA	960-1	422 (500-1)	NA	
CIRCLING	1000-1 462 (500-1)	1080-1 542 (600-1)	NA	