

APP CRS **087°**  
 Rwy Idg **3002**  
 TDZE **146**  
 Apt Elev **146**

# RNAV (GPS) RWY 9

DAVID G JOYCE (ØR5)

RNP APCH - GPS.

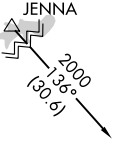
**⚠** Procedure NA at night. Rwy 9 helicopter visibility reduction below 1 SM NA. Use Alexandria Intl altimeter setting, when not received use Esler Rgnl altimeter setting.

MISSED APPROACH: Climb to 2000 direct XVOVOY and hold.

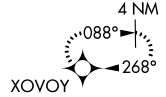
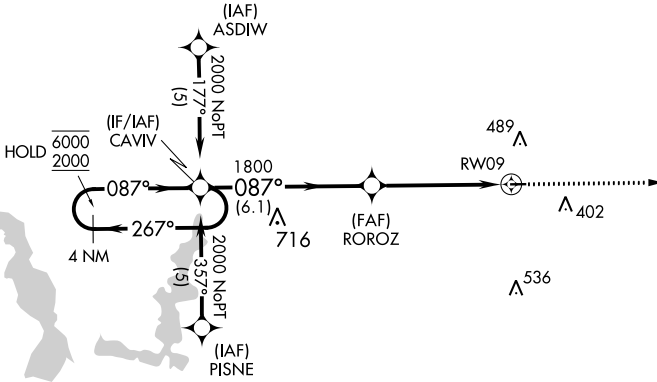
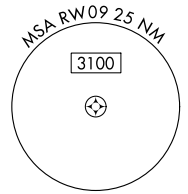
AEX ASOS  
**123.975**

POLK APP CON  
**125.4 302.2**

UNICOM  
**122.7 (CTAF) 0**

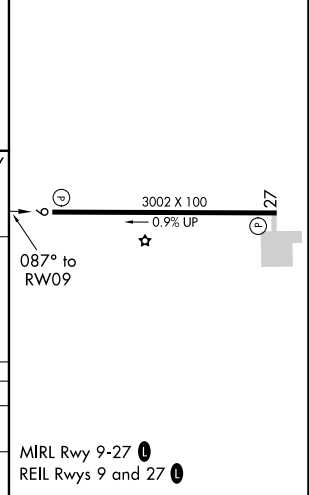
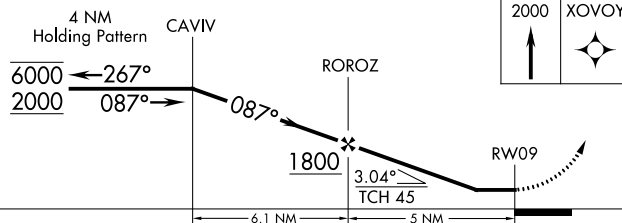


Procedure NA for arrivals at JENNA on V94 westbound.



Procedure NA for arrivals at NUBOY on V114-566 southeast bound.

ELEV **146** | TDZE **146**



CATEGORY	A	B	C	D
LNAV MDA	780-1	634 (700-1)		NA
<b>C</b> CIRCLING	780-1 634 (700-1)	900-1 754 (800-1)		NA

MIRL Rwy 9-27 **0**  
 REIL Rwy 9 and 27 **0**

SC-4, 05 SEP 2024 to 03 OCT 2024

SC-4, 05 SEP 2024 to 03 OCT 2024