

YUMA PROVING GROUND, ARIZONA

VOR RWY 6

VORTAC BZA 116.8 Chan 115	APCH CRS 048°	Rwy Idg TDZE Arprt Elev 6043 387 433
---	-------------------------	--

AL-6341 [USA]

LAGUNA AAF (KLGf)

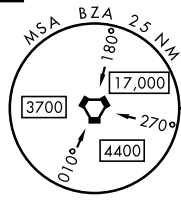
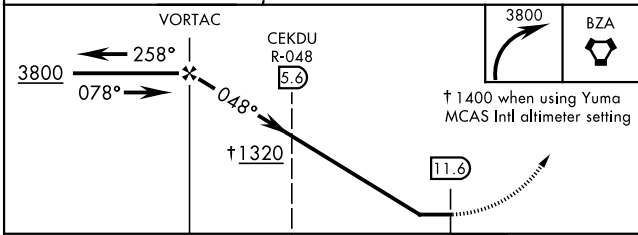
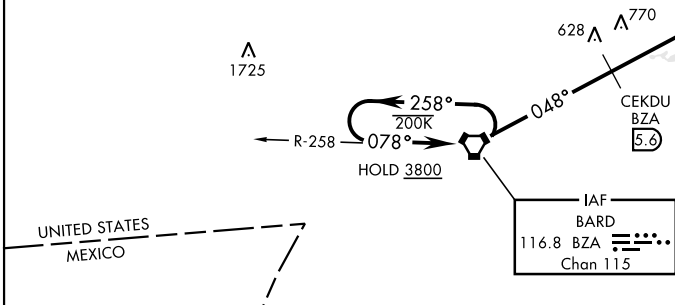
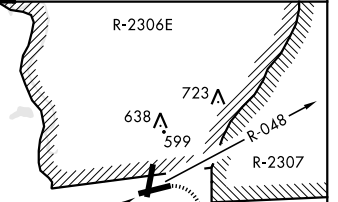
RADAR required for holding.

▼ * Procedure not authorized at night.
▲ NA ** Circling not authorized NW of rwy 06 and 18.

MISSED APPROACH: Climbing right turn to 3800 direct BZA VORTAC and hold, continue climb-in-hold to 3800.

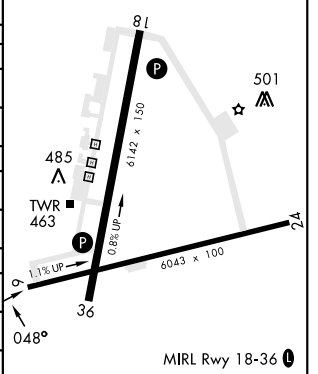
YUMA APP CON 124.7 371.975	TOWER ★ 126.2 (CTAF) 242.175	GND CON 121.8 229.4
--------------------------------------	--	-------------------------------

Helicopter visibility reduction not authorized.
 Procedure not authorized when airfield closed.
 Unlit road 379' MSL, 314' from threshold.
 Obtain local altimeter setting on CTAF.
 When not received, use Yuma MCAS Intl altimeter setting.
 Visual Segment - Obstacles



ELEV 433	TDZE 387
----------	----------

CATEGORY	A	B	C	D
S-6*	1320-1¼ 933 (900-1¼)		1320-2½ 933 (900-2½)	
CIRCLING**	1320-1¼ 887 (900-1¼)		1320-2¾ 887 (900-2¾)	1320-3 887 (900-3)
DME MINIMA				
S-6*	1040-1 653 (700-1)		1040-1⅞ 653 (700-1⅞)	
CIRCLING**	1080-1 647 (700-1)		1080-1⅞ 647 (700-1⅞)	1080-2 647 (700-2)
YUMA MCAS/YUMA Intl ALTIMETER SETTING				
S-6*	1400-1¼ 1013 (1000-1¼)	1400-1½ 1013 (1000-1½)	1400-3 1013 (1000-3)	
CIRCLING**	1400-1¼ 967 (1000-1¼)	1400-1½ 967 (1000-1½)	1400-3 967 (1000-3)	
YUMA MCAS/YUMA Intl ALTIMETER SETTING DME MINIMA				
S-6*	1120-1 733 (700-1)		1120-2 733 (700-2)	
CIRCLING**	1160-1 727 (800-1)		1160-2 727 (800-2)	1160-2¼ 727 (800-2¼)



FAF to MAP 11.6 NM					
Knots	60	90	120	150	180
Min:Sec	11:36	7:44	5:48	4:38	3:52

YUMA PROVING GROUND, ARIZONA

32° 52' N - 114° 24' W

LAGUNA AAF (KLGf)

Amdt 7 05OCT23

VOR RWY 6

SW-4, 05 SEP 2024 to 03 OCT 2024

SW-4, 05 SEP 2024 to 03 OCT 2024