

| | | | |
|--|------------------------|---|-------------|
| WAAS CH 40033 W08A | APP CRS 084° | Rwy Idg TDZE 170 Apt Elev 176 | 5004 |
|--|------------------------|---|-------------|

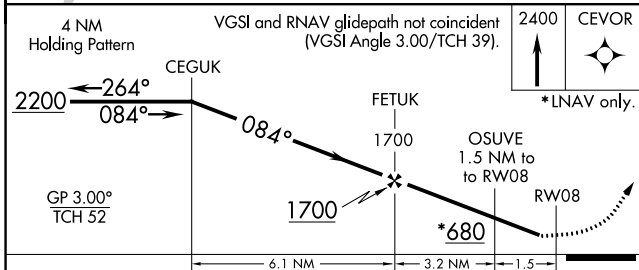
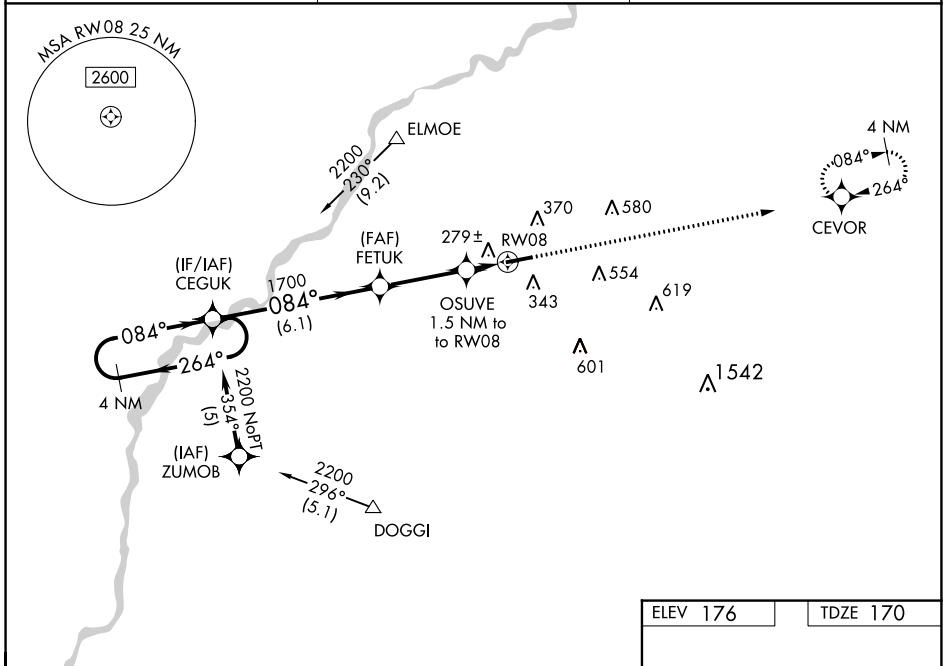
RNAV (GPS) RWY 8

CAMILLA-MITCHELL COUNTY (CXU)

⚠ Baro-VNAV NA when using Albany altimeter setting. For uncompensated Baro-VNAV systems, LNAV/VNAV NA below -15°C (5°F) or above 54°C (130°F). DME/DME RNP-0.3 NA. When local altimeter setting not received, use Albany altimeter setting and increase LPV DA to 513 feet; increase LNAV/VNAV DA to 623 feet; increase all MDAs 60 feet and LNAV Cats C/D and Circling Cat D visibility ¼ SM.

MISSED APPROACH:
Climb to 2400 direct CEVOR and hold.

| | | |
|---------------------------|--|--|
| AWOS-3T 118.675 | JACKSONVILLE CENTER 125.75 363.075 | UNICOM 122.8 (CTAF) 📻 |
|---------------------------|--|--|



| | |
|----------|----------|
| ELEV 176 | TDZE 170 |
|----------|----------|

REIL Rwy 8 and 26 **📻**
MIRL Rwy 8-26 **📻**

| CATEGORY | A | B | C | D |
|--------------|----------------------|----------------------|------------------------|------------------------|
| LPV DA | | 465-1 | 295 (300-1) | |
| LNAV/VNAV DA | | 575-1⅜ | 405 (400-1⅜) | |
| LNAV MDA | | 540-1 | 370 (400-1) | |
| CIRCLING | 720-1 544 (600-1) | 760-1 584 (600-1) | 920-2¼ 744 (800-2¼) | 940-2½ 764 (800-2½) |

SE-4, 05 SEP 2024 to 03 OCT 2024

SE-4, 05 SEP 2024 to 03 OCT 2024