

WAAS CH 45840 W20A	APP CRS 201°	Rwy Idg TDZE Apt Elev	5902 7610 7611
--	------------------------	-----------------------------	---

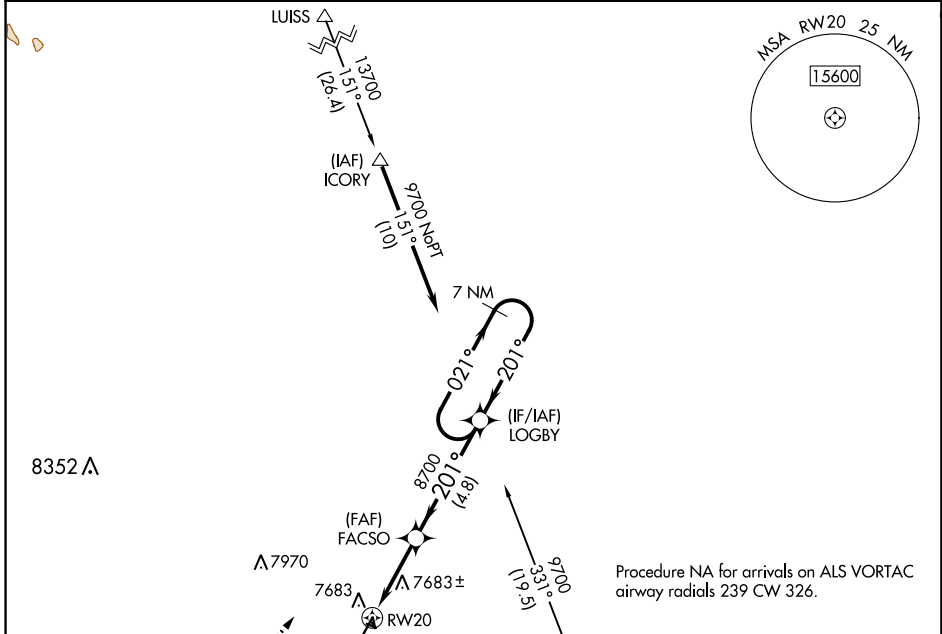
RNAV (GPS) RWY 20

MONTE VISTA MUNI (MVI)

NA Circling NA to Rwys 10, 28, 16 and 34. DME/DME RNP-0.3 NA. Baro-VNAV NA. Use Alamosa altimeter setting.

MISSED APPROACH: (Do not exceed 190K until LOGBY) Climb to 8100 on heading 201° then climbing right turn to 9700 direct LOGBY and hold.

ALS AWOS-3 135.175	DENVER CENTER 128.375 379.95	UNICOM 122.8 (CTAF)
------------------------------	--	-------------------------------



8100 ↑
hdg 201°

9700 ↗

LOGBY

VGSI and RNAV glidepath not coincident (VGSI Angle 3.00/TCH 38).

7 NM Holding Pattern

LOGBY

FACSO

8700

8700

201°

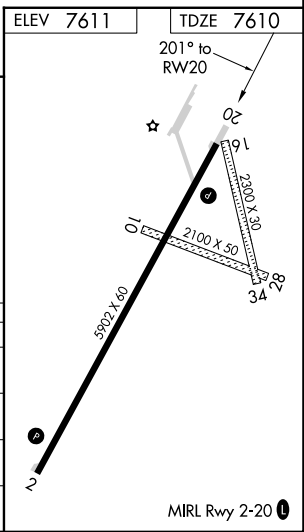
201°

9700

GP 3.00° TCH 52

3.3 NM

4.8 NM



CATEGORY	A	B	C	D
LPV DA		7894-1	284 (300-1)	
LNAV/VNAV DA		7894-1	284 (300-1)	
LNAV MDA		7980-1	370 (400-1)	
C CIRCLING	8060-1 449 (500-1)	8080-1 469 (500-1)	8180-1½ 569 (600-1½)	8360-2½ 749 (800-2½)

SW-1, 05 SEP 2024 to 03 OCT 2024

SW-1, 05 SEP 2024 to 03 OCT 2024