

WAAS CH 78238 W17A	APP CRS 174°	Rwy Idg 4149 TDZE 1232 Apt Elev 1232
--	------------------------	---

RNAV (GPS) RWY 17

GEORGE L SCOTT MUNI (3Y2)

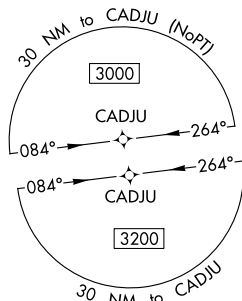
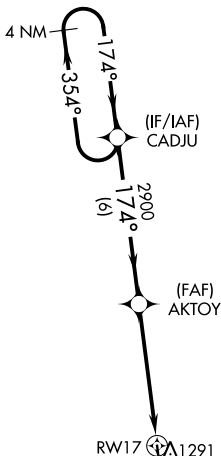
RNP APCH.

NA For uncompensated Baro-VNAV systems, LNAV/VNAV NA below -17°C (2°F) or above 54°C (130°F). Baro-VNAV and VDP NA when using DecoraH altimeter setting. Helicopter visibility reduction below ¾ SM NA. Obtain local altimeter setting on CTAF; when not received, use DecoraH altimeter setting and increase LPV and LNAV/VNAV DA to 1533 all Cats, increase all MDA 60 feet, and LNAV Cat C visibility ½ mile.

MISSED APPROACH:
Climb to 3200 direct KIRTS and hold.

MINNEAPOLIS CENTER
118.85

UNICOM
122.8 (CTAF)



MISSED APCH FIX



△1726

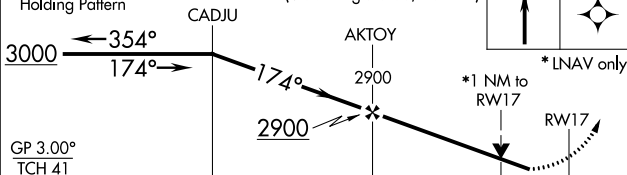
1545 △

△1617

4 NM Holding Pattern

VGSI and RNAV glidepath not coincident (VGSI Angle 3.00/TCH 41).

3200 KIRTS



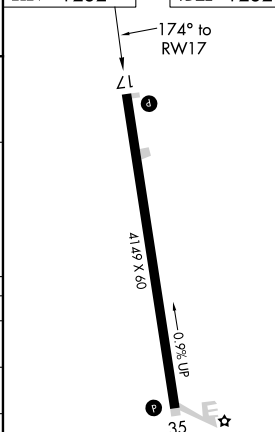
*LNAV only

*1 NM to RWY 17

RWY 17

GP 3.00°
TCH 41

ELEV 1232 TDZE 1232



CATEGORY	A	B	C	D
LPV DA	1482-1	250 (300-1)		NA
LNAV/VNAV DA	1482-1	250 (300-1)		NA
LNAV MDA	1580-1	348 (400-1)		NA
C CIRCLING	1740-1	508 (600-1)	1860-1¾ 628 (700-1¾)	NA

MIRL Rwy 17-35