

WAAS CH <b>82538</b> <b>W35A</b>	APP CRS <b>354°</b>	Rwy Idg TDZE <b>1223</b> Apt Elev <b>1232</b>
--	------------------------	---

# RNAV (GPS) RWY 35

GEORGE L SCOTT MUNI (3Y2)

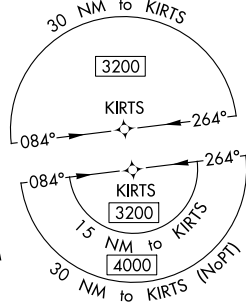
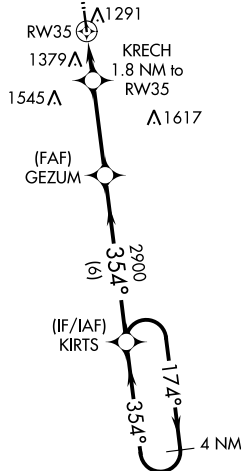
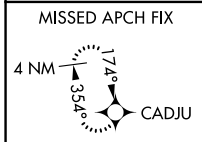
RNP APCH.

**NA** For uncompensated Baro-VNAV systems, LNAV/VNAV NA below -17°C (2°F) or above 54°C (130°F). Baro-VNAV and VDP NA when using Decorah altimeter setting. Obtain local altimeter setting on CTAF; when not received, use Decorah altimeter setting and increase LPV DA to 1524 all Cats and all visibilities 1/8 mile, LNAV/VNAV DA to 1773 all Cats and all visibilities 1/8 mile; increase all MDA 60 feet and LNAV Cat C visibility 1/4 mile.

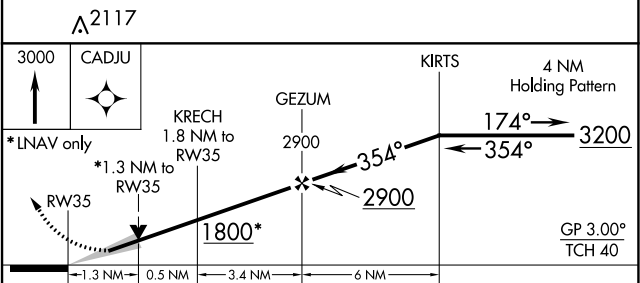
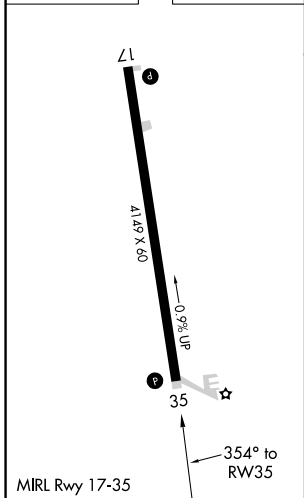
**MISSED APPROACH:**  
Climb to 3000 direct CADJU and hold.

MINNEAPOLIS CENTER  
**118.85**

UNICOM  
**122.8 (CTAF) 0**



ELEV 1232	TDZE 1223
-----------	-----------



CATEGORY	A	B	C	D
LPV DA	1473-1 250 (300-1)			NA
LNAV/VNAV DA	1722-1 7/8 499 (500-1 1/8)			NA
LNAV MDA	1640-1	417 (500-1)	1640-1 1/8 417 (500-1 1/8)	NA
<b>C</b> CIRCLING	1740-1	508 (600-1)	1860-1 3/4 628 (700-1 1/4)	NA

NC-3, 05 SEP 2024 to 03 OCT 2024

NC-3, 05 SEP 2024 to 03 OCT 2024