

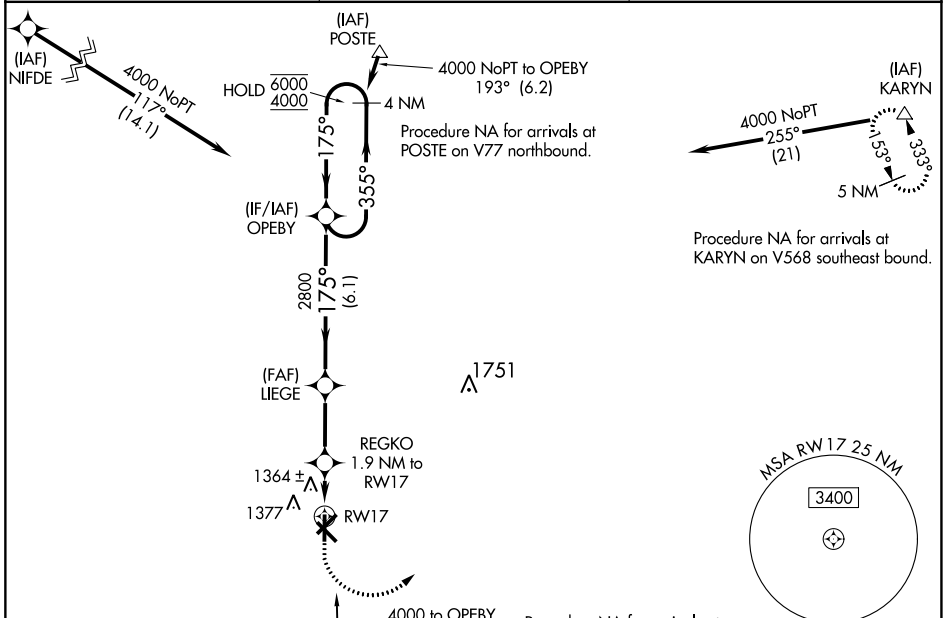
WAAS CH <b>97332</b> <b>W17A</b>	APP CRS <b>175°</b>	Rwy ldg TDZE Apt Elev	<b>5101</b> <b>1275</b> <b>1275</b>
--	------------------------	-----------------------------	---

# RNAV (GPS) RWY 17

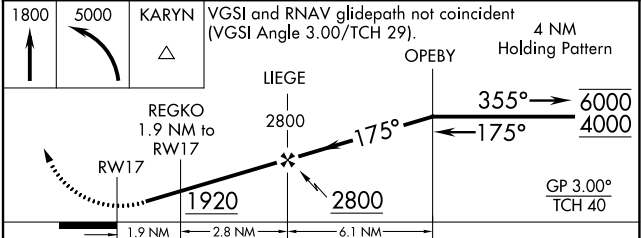
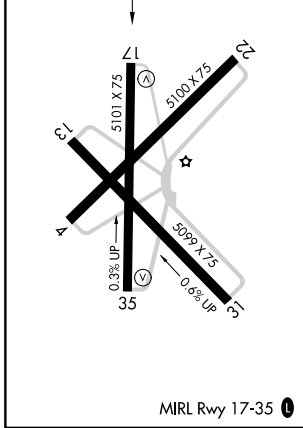
OLNEY MUNI (ONY)

RNP APCH - GPS.	MISSED APPROACH: Climb to 1800 then climbing left turn to 5000 direct KARYN and hold.
<p>▼</p> <p>▲ NA</p> <p>Rwy 17 helicopter visibility reduction below 3/4 SM NA. Baro-VNAV NA. Use Graham altimeter setting.</p>	

RPH AWOS-3P <b>118.025</b>	FORT WORTH CENTER <b>133.5 350.35</b>	UNICOM <b>122.8 (CTAF) 0</b>
-------------------------------	--	---------------------------------



ELEV 1275	TDZE 1275
-----------	-----------



CATEGORY	A	B	C	D
LPV DA	1592-7/8	317 (400-7/8)		NA
LNAV/ VNAV DA	1592-7/8	317 (400-7/8)		NA
LNAV MDA	1700-1	425 (500-1)	1700-1 1/4 425 (500-1 1/4)	NA
<input checked="" type="checkbox"/> CIRCLING	1760-1	485 (500-1)	1760-1 1/2 485 (500-1 1/2)	NA

SC-2, 05 SEP 2024 to 03 OCT 2024

SC-2, 05 SEP 2024 to 03 OCT 2024