

# RNAV (GPS) RWY 16

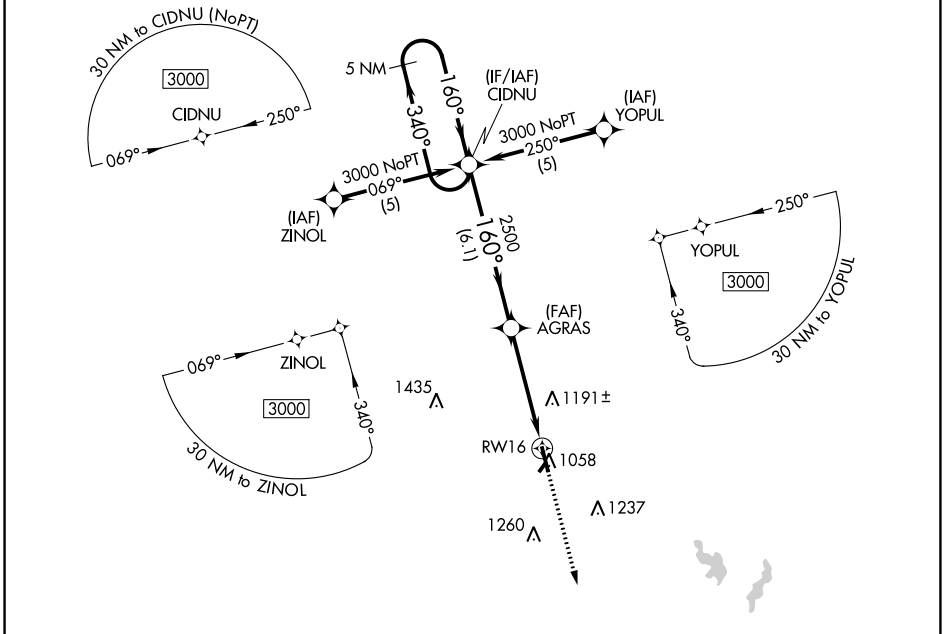
SEMINOLE MUNI (SRE)

APP CRS <b>160°</b>	Rwy Idg <b>5004</b>
	TDZE <b>1023</b>
	Apt Elev <b>1023</b>

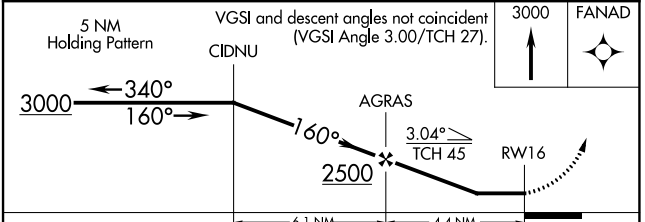
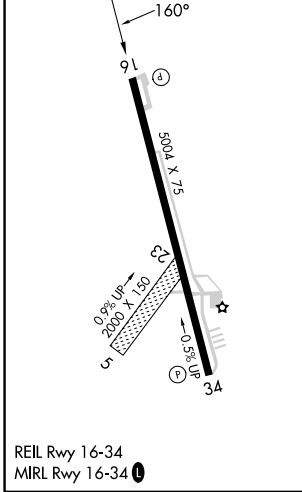
RNP APCH. Procedure NA at night. Circling NA to Rwy 5 and 23. Rwy 16 helicopter visibility reduction below 1 SM NA. When local altimeter setting not received, use Shawnee Rgnl altimeter setting and increase all MDAs 40 feet, and increase Circling Cat C visibility 1/4 SM.

MISSED APPROACH: Climb to 3000 direct FANAD and hold.

AWOS-3 <b>118.625</b>	FORT WORTH CENTER <b>132.2 338.35</b>	UNICOM <b>122.80</b>
--------------------------	--	-------------------------



ELEV 1023	TDZE 1023
-----------	-----------



CATEGORY	A	B	C	D
LNAV MDA	1500-1	477 (500-1)	1500-1/4 477 (500-1/4)	NA
CIRCLING	1500-1 477 (500-1)	1560-1 537 (600-1)	1620-1/2 597 (600-1/2)	NA

SC-1, 05 SEP 2024 to 03 OCT 2024

SC-1, 05 SEP 2024 to 03 OCT 2024