

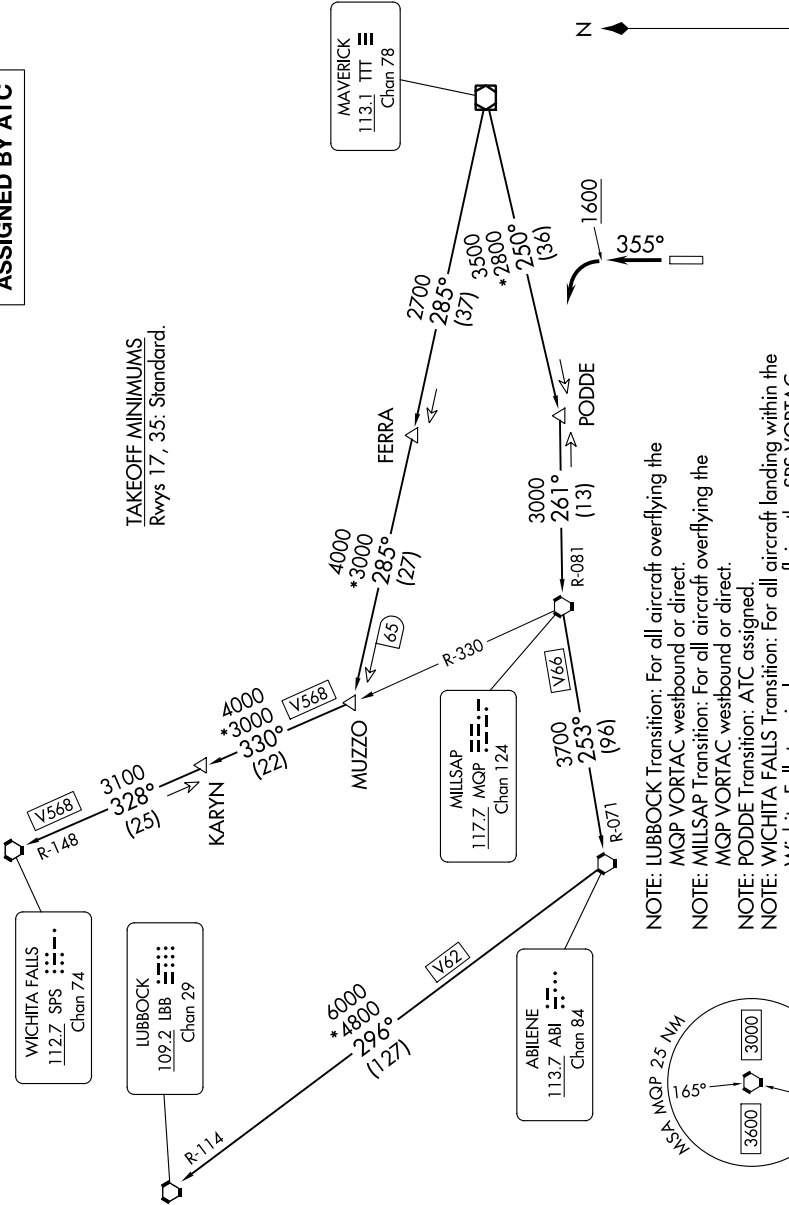
# KINGDOM FOUR DEPARTURE

REGIONAL DEP CON  
135.975 379.9  
CTAF  
122.7

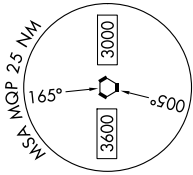
**TOP ALTITUDE:  
ASSIGNED BY ATC**

RADAR and DME required.

TAKEOFF MINIMUMS  
Rwys 17, 35: Standard.



- NOTE: LUBBOCK Transition: For all aircraft overlying the MQP VORTAC westbound or direct.
- NOTE: MILLSAP Transition: For all aircraft overlying the MQP VORTAC westbound or direct.
- NOTE: PODDE Transition: ATC assigned.
- NOTE: WICHITA FALLS Transition: For all aircraft landing within the Wichita Falls terminal area or overlying the SPS VORTAC.
- NOTE: For all aircraft requesting 17000 and below.



NOTE: Chart not to scale.

(CONTINUED ON FOLLOWING PAGE)

# KINGDOM FOUR DEPARTURE