

(OYODA2.OYODA) 21336

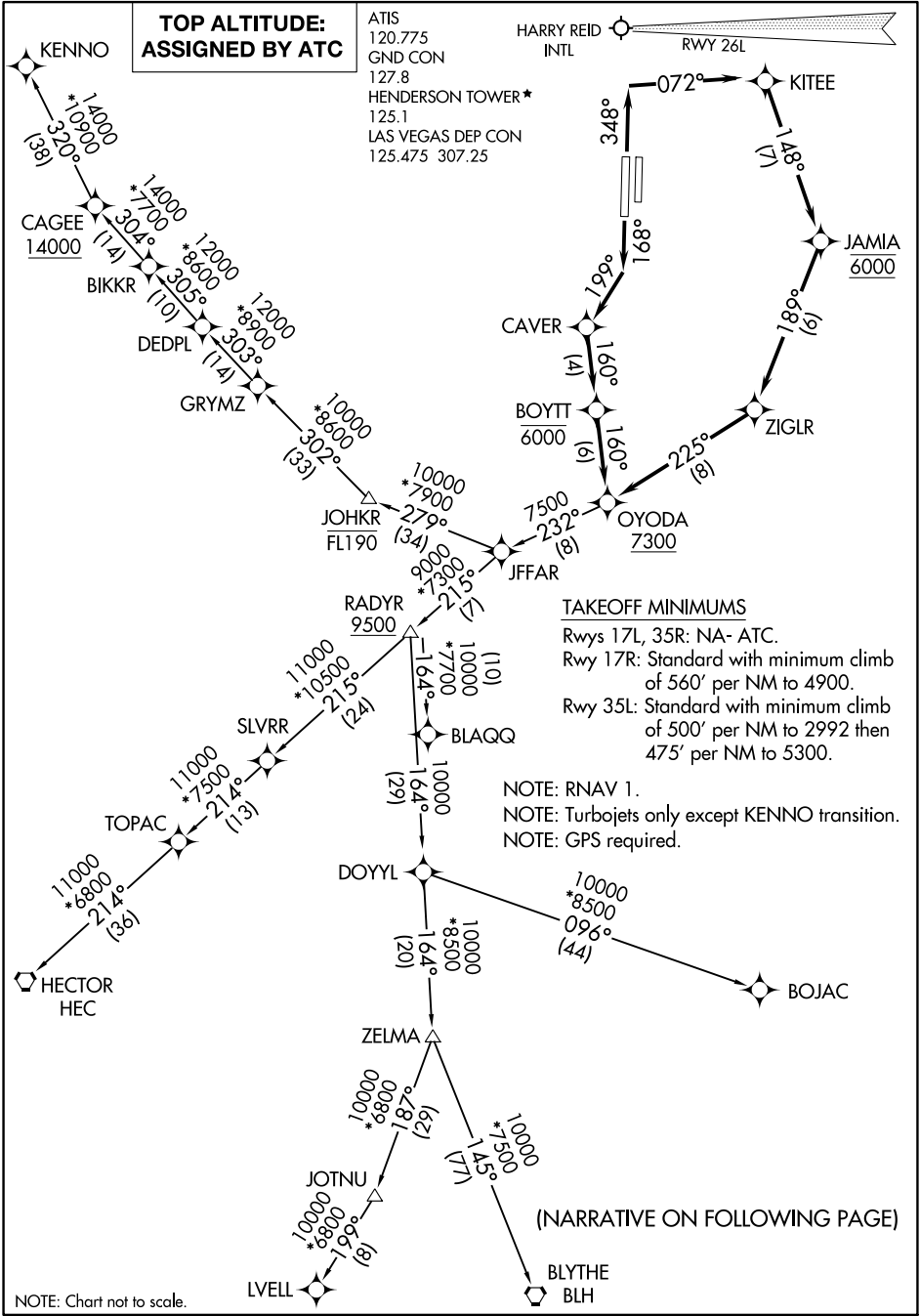
OYODA TWO DEPARTURE (RNAV)

AL-6514 (FAA)

HENDERSON EXEC (HND)
LAS VEGAS, NEVADA

**TOP ALTITUDE:
ASSIGNED BY ATC**

ATIS
120.775
GND CON
127.8
HENDERSON TOWER*
125.1
LAS VEGAS DEP CON
125.475 307.25



TAKEOFF MINIMUMS

Rwys 17L, 35R: NA- ATC.
Rwy 17R: Standard with minimum climb of 560' per NM to 4900.
Rwy 35L: Standard with minimum climb of 500' per NM to 2992 then 475' per NM to 5300.

NOTE: RNAV 1.
NOTE: Turbojets only except KENNO transition.
NOTE: GPS required.

(NARRATIVE ON FOLLOWING PAGE)

NOTE: Chart not to scale.

SW-4, 05 SEP 2024 to 03 OCT 2024

SW-4, 05 SEP 2024 to 03 OCT 2024

OYODA TWO DEPARTURE (RNAV)

(OYODA2.OYODA) 22APR21

LAS VEGAS, NEVADA
HENDERSON EXEC (HND)