

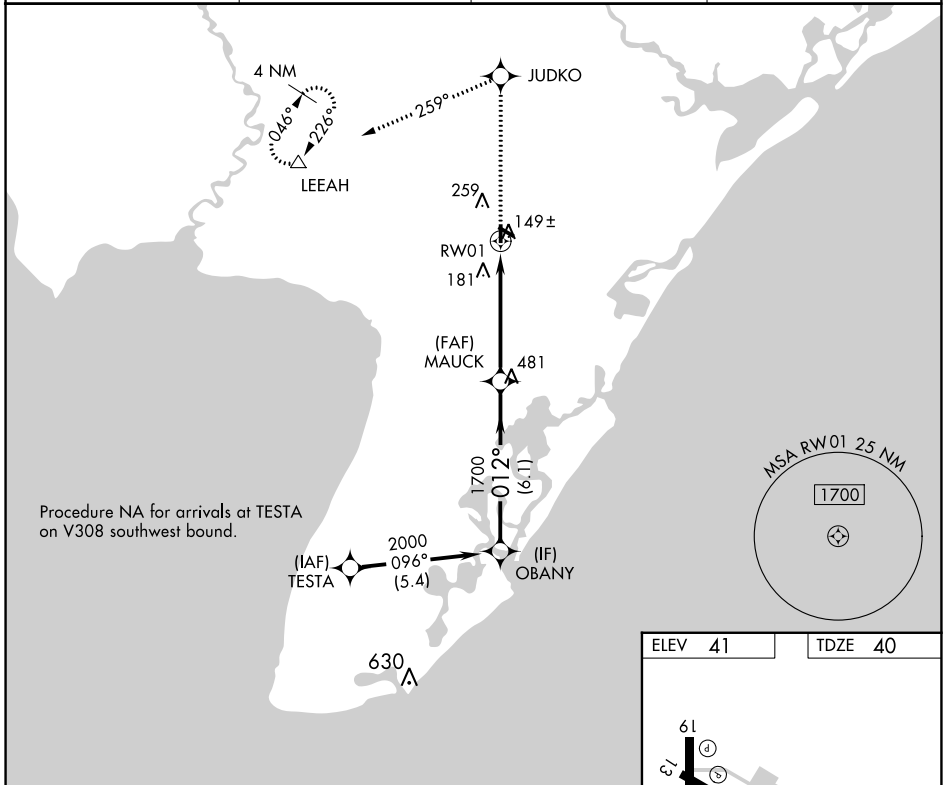
APP CRS	Rwy Idg	<b>3304</b>
<b>012°</b>	TDZE	<b>40</b>
	Apt Elev	<b>41</b>

# RNAV (GPS) RWY 1

WOODBINE MUNI (OBI)

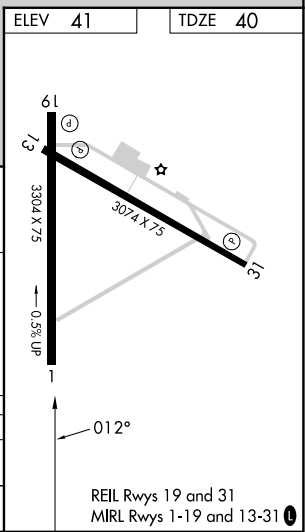
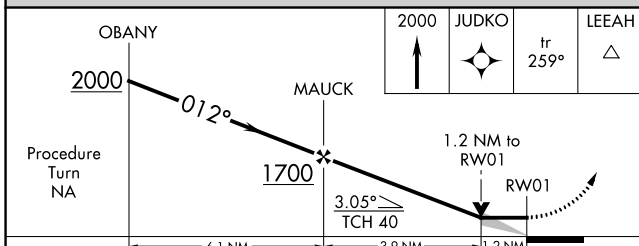
RNP APCH.	<p>▼ <b>NA</b></p> <p>When local altimeter setting not received, use Millville Muni altimeter setting and increase all MDA 60 feet, and increase LNAV and Circling Cat C visibility ¼ mile. VDP NA when using Millville Muni altimeter setting. Circling Rwy 13, 19, 31 NA at night. Rwy 1 helicopter visibility reduction below ¾ SM NA.</p>	<p>MISSED APPROACH: Climb to 2000 direct JUDKO and on track 259° to LEEAH and hold.</p>
-----------	---	---

AWOS-3	ATLANTIC CITY APP CON	GCO	UNICOM
<b>120.475</b>	<b>124.6 327.125</b>	<b>121.725</b>	<b>123.05 (CTAF) 0</b>



NE-2, 05 SEP 2024 to 03 OCT 2024

NE-2, 05 SEP 2024 to 03 OCT 2024



CATEGORY	A	B	C	D
LNAV MDA	440-1	400 (400-1)	440-1½ 400 (400-1½)	NA
CIRCLING	620-1	579 (600-1)	620-1½ 579 (600-1½)	NA