

LOC/DME I-AFP <b>108.55</b> Chan <b>22(Y)</b>	APP CRS <b>342°</b>	Rwy ldg TDZE Apt Elev	<b>5498</b> <b>299</b> <b>300</b>
---	------------------------	-----------------------------	---

# ILS or LOC RWY 34

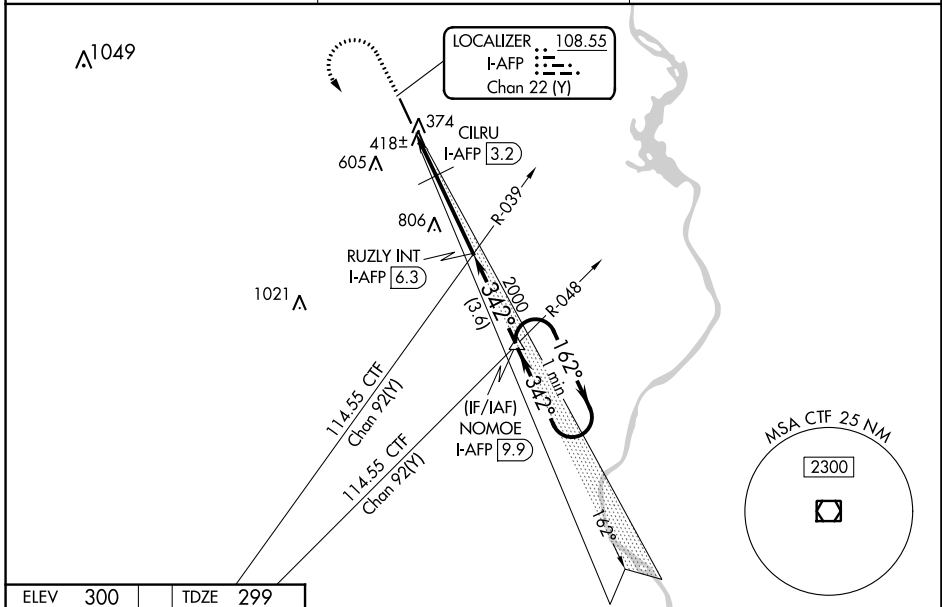
ANSON COUNTY/JEFF CLOUD FLD (AFP)

**▽**  
**▲**

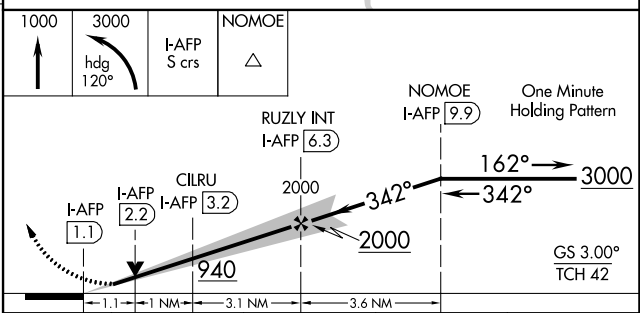
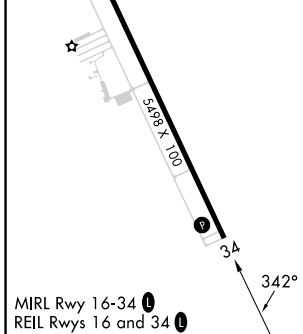
Rwy 34 helicopter visibility reduction below 3/4 SM NA.

MISSED APPROACH: Climb to 1000 then climbing left turn to 3000 on heading 120° and on I-AFP S course (162°) to NOMOE INT/I-AFP 9.9 DME and hold.

AWOS-3 <b>119.325</b>	CHARLOTTE APP CON <b>120.05 307.8</b>	UNICOM <b>122.8 (CTAF) 1</b>
--------------------------	--	---------------------------------



ELEV 300	TDZE 299
----------	----------



CATEGORY	A	B	C	D
S-ILS 34	649-1 350 (400-1)			
S-LOC 34	940-1	641 (700-1)	940-1 7/8	641 (700-1 7/8)
CILRU FIX MINIMUMS				
S-LOC 34	820-1	521 (600-1)	820-1 1/2	521 (600-1 1/2)

FAF to MAP 5.2 NM					
Knots	60	90	120	150	180
Min:Sec	5:12	3:28	2:36	2:05	1:44

SE-2, 05 SEP 2024 to 03 OCT 2024

SE-2, 05 SEP 2024 to 03 OCT 2024