

NORWALK, OHIO

AL-6640 (FAA)

24193

WAAS CH 86835 W28A	APP CRS 276°	Rwy Idg TDZE Apt Elev	3541 851 853
--	------------------------	-----------------------------	---

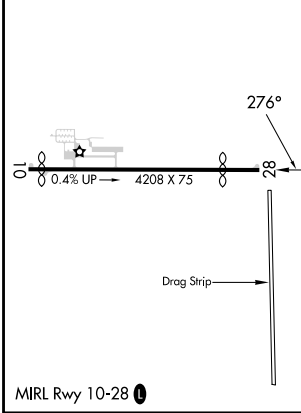
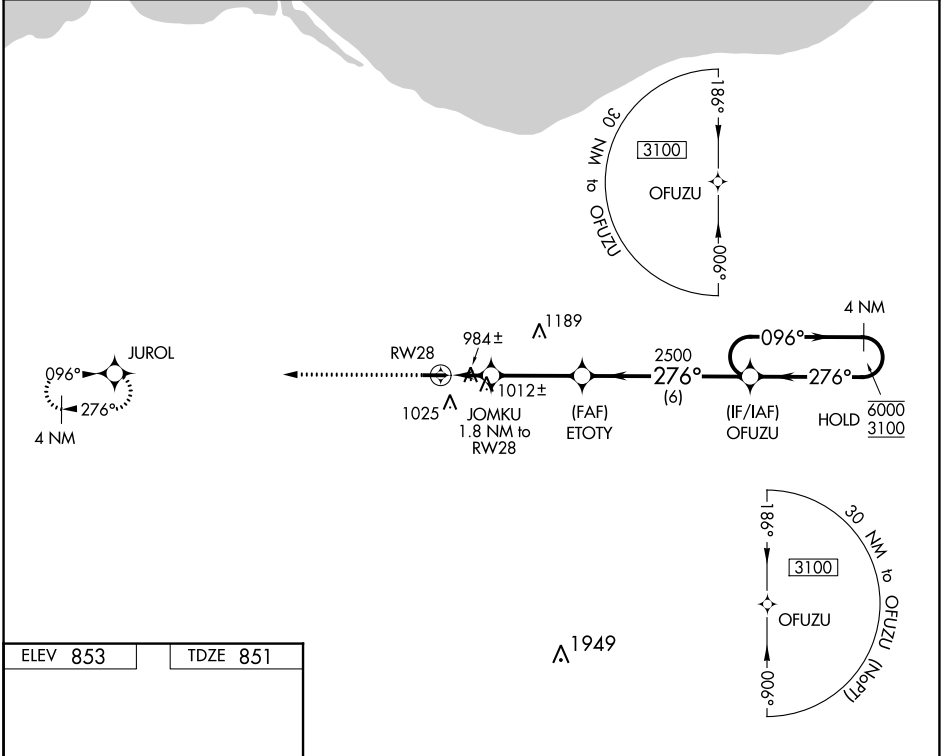
RNAV (GPS) RWY 28

NORWALK-HURON COUNTY (5A.1)

RNP APCH. MISSED APPROACH: Climb to 3000 direct JUROL and hold.

▼ Rwy 28 helicopter visibility reduction below 1 SM NA. Procedure NA at night.
 ▲ NA Use Cleveland-Hopkins Intl climeter setting.

CLE ASOS 127.85	CLEVELAND APP CON ★ 128.35 360.65	UNICOM 122.8 (CTAF) 0
---------------------------	---	---------------------------------



3000	JUROL	ETOTY	OFUZU	4 NM Holding Pattern
↑	✦	JOMKU 1.8 NM to RWY 28	2500	6000 / 3100
		1460	1.8 NM	3.3 NM
			6 NM	
CATEGORY	A	B	C	D
LP MDA	1320-1	469 (500-1)	1320-1 $\frac{3}{8}$ 469 (500-1 $\frac{3}{8}$)	NA
LNAV MDA	1360-1	509 (600-1)	1360-1 $\frac{3}{8}$ 509 (600-1 $\frac{3}{8}$)	NA
C CIRCLING	1420-1	567 (600-1)	1440-1 $\frac{1}{2}$ 587 (600-1 $\frac{1}{2}$)	NA

NORWALK, OHIO
Orig-B 16AUG18

41°15'N-82°33'W

NORWALK-HURON COUNTY (5A.1)

RNAV (GPS) RWY 28

EC-2, 05 SEP 2024 to 03 OCT 2024

EC-2, 05 SEP 2024 to 03 OCT 2024