

WAAS CH <b>86730</b> <b>W34A</b>	APP CRS <b>339°</b>	Rwy Idg TDZE Apt Elev	<b>3298</b> <b>1023</b> <b>1023</b>
--	------------------------	-----------------------------	---

# RNAV (GPS) RWY 34

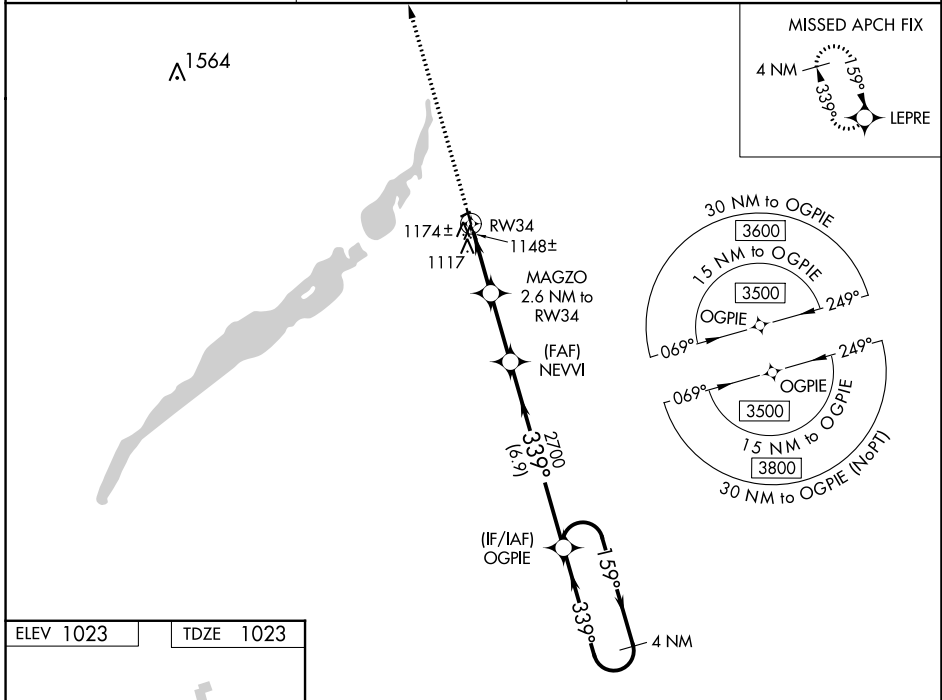
WHEATON MUNI (ETH)

RNP APCH - GPS.

**⚠** Rwy 34 helicopter visibility reduction below 3/4 SM NA. When local altimeter setting not received, use Wahpeton altimeter setting and increase all MDA 80 feet, increase LP and RNAV Cat C visibility to 3/8 SM. Circling NA to Rwy 6 and 24.

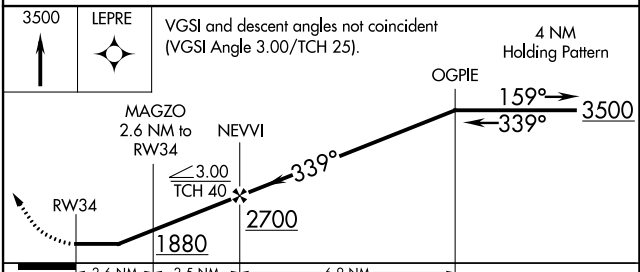
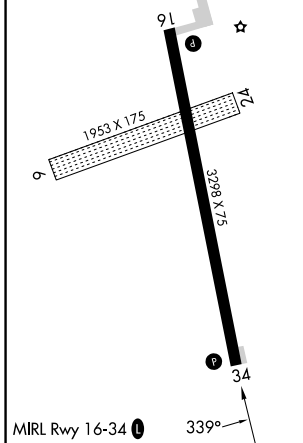
MISSED APPROACH: Climb to 3500 direct LEPRE and hold.

AWOS-3 <b>118.775</b>	MINNEAPOLIS CENTER <b>126.1 269.2</b>	UNICOM <b>122.8 (CTAF) 0</b>
--------------------------	--	---------------------------------



NC-1, 05 SEP 2024 to 03 OCT 2024

NC-1, 05 SEP 2024 to 03 OCT 2024



CATEGORY	A	B	C	D
LP MDA	1400-1 377 (400-1)			NA
LNAV MDA	1440-1	417 (500-1)	1440-1½ 417 (500-1½)	NA
CIRCLING	1480-1	457 (500-1)	1500-1½ 477 (500-1½)	NA