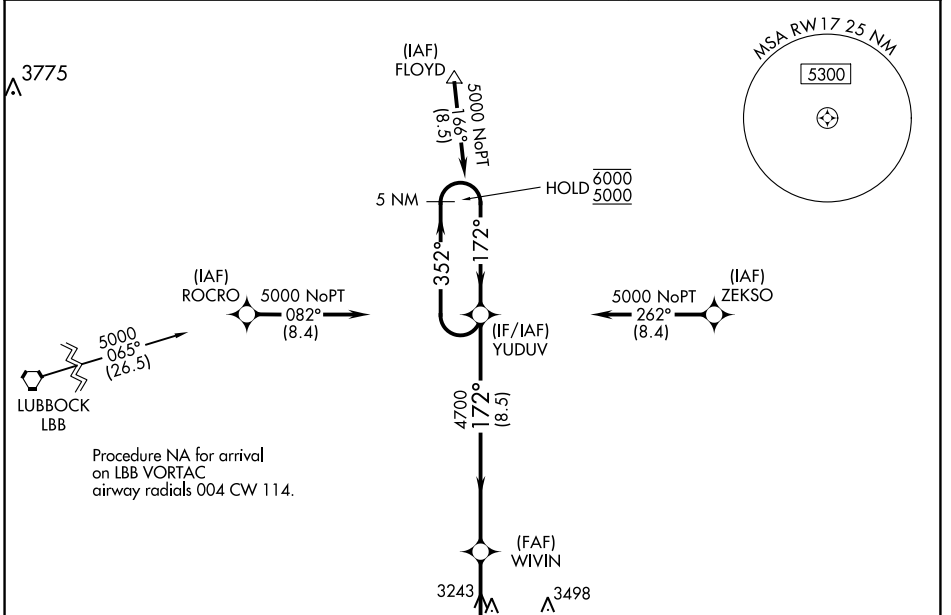


WAAS CH <b>82722</b> <b>W17A</b>	APP CRS <b>172°</b>	Rwy Idg TDZE Apt Elev	<b>3600</b> <b>3018</b> <b>3018</b>
--	------------------------	-----------------------------	---

# RNAV (GPS) RWY 17

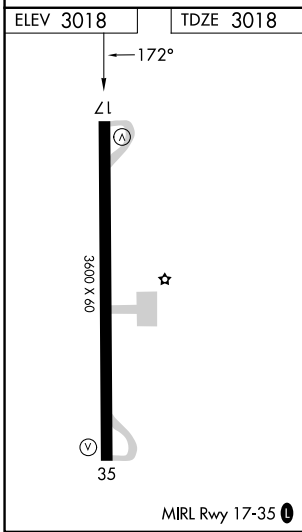
CROSBYTON MUNI (8F3)

RNP APCH.		MISSED APPROACH: Climb to 5000 direct CEGUT and hold.
<p><b>▼</b> Procedure NA at night.</p> <p><b>▲NA</b> Rwy 17 helicopter visibility reduction below 1 SM NA. Use Lubbock altimeter setting.</p>		
LBB ASOS <b>125.3</b>	LUBBOCK APP CON <b>119.2 351.8</b>	UNICOM <b>122.8 (CTAF) 0</b>



SC-2, 05 SEP 2024 to 03 OCT 2024

SC-2, 05 SEP 2024 to 03 OCT 2024



ELEV 3018	TDZE 3018	MISSED APCH FIX CEGUT		
<p>3551 <b>▲</b></p> <p>5000 <b>▲</b></p> <p>CEGUT <b>✧</b></p>		<p>YUDUV 5 NM Holding Pattern</p> <p>WIVIN</p> <p>RW17</p> <p>3.9 NM</p> <p>8.5 NM</p> <p>4700</p> <p>352° → 6000</p> <p>← 172° 5000</p> <p>4.00° TCH 40</p>		
CATEGORY	A	B	C	D
LP MDA	3660-1	642 (700-1)	NA	
LNAV MDA	3700-1	682 (700-1)	NA	