

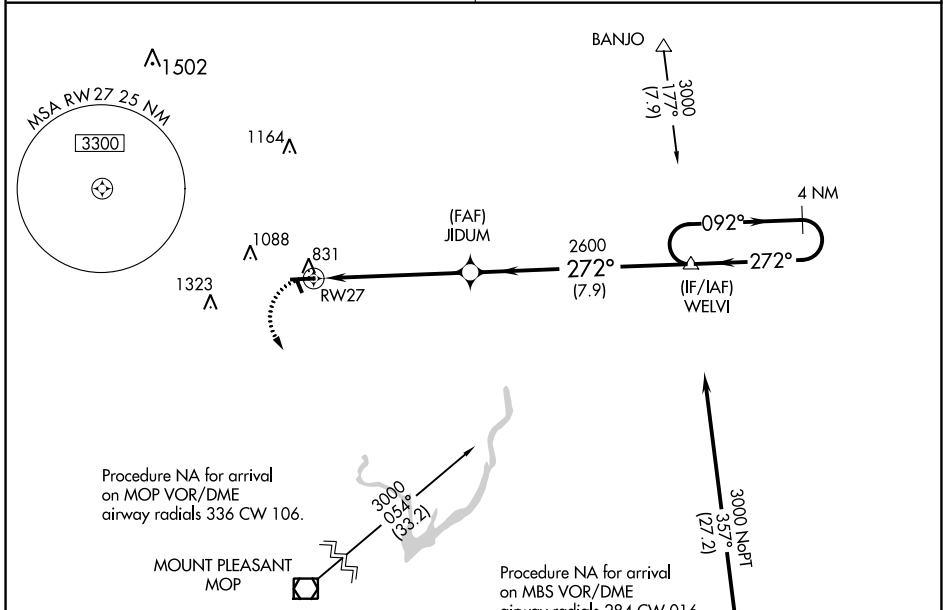
WAAS CH 99326 W27A	APP CRS 272°	Rwy ldg TDZE Apt Elev	4699 773 774
----------------------------------------	------------------------	-----------------------------	-----------------------------------------

RNAV (GPS) RWY 27

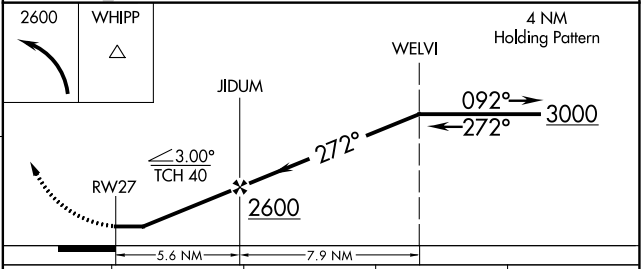
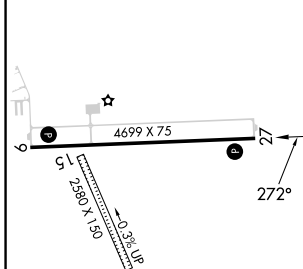
GLADWIN ZETTEL MEML (GDW)

RNP APCH - GPS.		MISSED APPROACH: Climbing left turn to 2600 direct WHIPP and hold.
<p>NA Circling NA to Rwys 15 and 33. Rwy 27 helicopter visibility reduction below 1 SM NA. Procedure NA at night. Use Mount Pleasant altimeter setting; when not received, use Midland altimeter setting and increase all MDA 20 feet; increase LP and LNAV Cats C/D visibility 1/8 SM.</p>		

GREAT LAKES APP CON* 126.45 235.625	UNICOM 122.8 (CTAF)
-----------------------------------------------	-------------------------------



ELEV 774	TDZE 773
----------	----------



CATEGORY	A	B	C	D
LP MDA	1280-1	507 (600-1)	1280-1 3/8	507 (600-1 1/8)
LNAV MDA	1280-1	507 (600-1)	1280-1 3/8	507 (600-1 1/8)
CIRCLING	1420-1 646 (700-1)	1500-1 726 (800-1)	1520-2 1/4 746 (800-2 1/4)	1700-3 926 (1000-3)

MIRL Rwy 9-27
REIL Rwy 9 and 27

EC-1, 05 SEP 2024 to 03 OCT 2024

EC-1, 05 SEP 2024 to 03 OCT 2024