

WAAS CH 48826 W09A	APP CRS 092°	Rwy Idg TDZE Apt Elev	4699 774 774
--	------------------------	-----------------------------	---

RNAV (GPS) RWY 9

GLADWIN ZETTEL MEML (GDW)

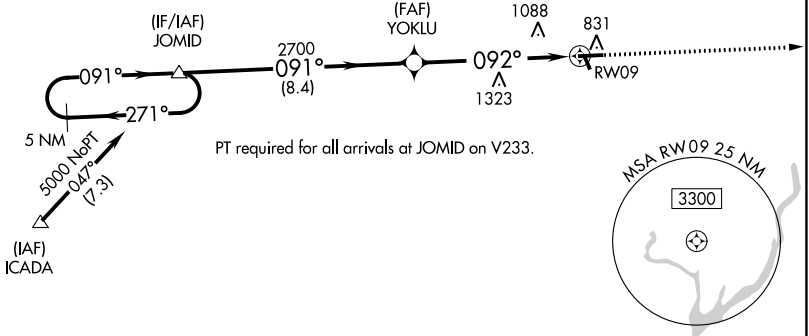
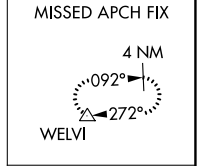
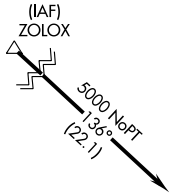
RNP APCH.

▽ Circling NA to Rwy's 15 and 33. Rwy 9 helicopter visibility reduction below 1 SM NA.
△ NA DME/DME RNP-0.3 NA. Procedure NA at night. Use Mount Pleasant altimeter setting;
 when not received, use Midland altimeter setting and increase all MDA 20 feet;
 increase LP and LNAV Cats C/D visibility 1/8 SM.

MISSED APPROACH: Climb to 3000 direct WELVI and hold.

GREAT LAKES APP CON *
126.45 235.625

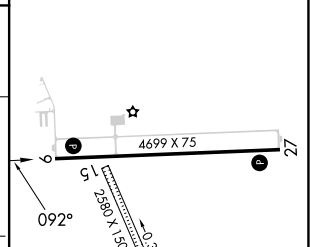
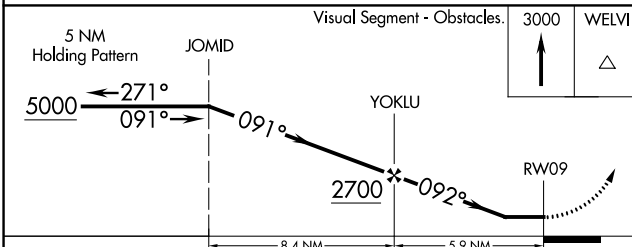
UNICOM
122.8 (CTAF) 0



EC-1, 05 SEP 2024 to 03 OCT 2024

EC-1, 05 SEP 2024 to 03 OCT 2024

ELEV 774	TDZE 774
----------	----------



CATEGORY	A	B	C	D
LP MDA	1440-1	666 (700-1)	1440-1 7/8	666 (700-1 1/8)
LNAV MDA	1440-1	666 (700-1)	1440-1 7/8	666 (700-1 1/8)
CIRCLING	1440-1 666 (700-1)	1500-1 726 (800-1)	1520-2 1/4 746 (800-2 1/4)	1700-3 926 (1000-3)

REIL Rwy's 9 and 27 0
 MRL Rwy 9-27 0