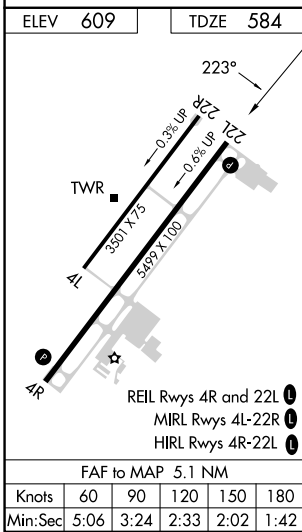
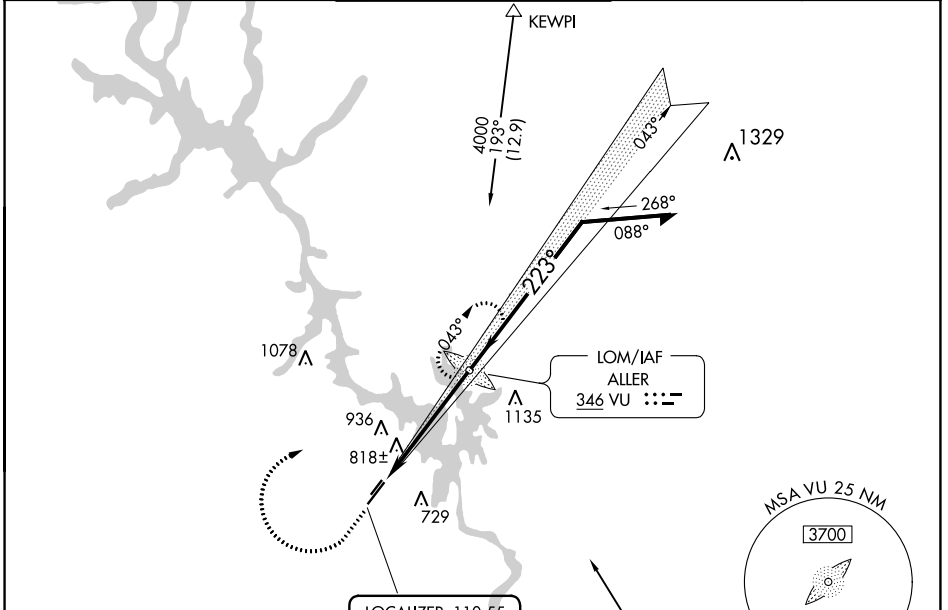


LOC I-VUJ 110.55	APP CRS 223°	Rwy ldg TDZE Apt Elev	5499 584 609
----------------------------	------------------------	-----------------------------	---

ILS or LOC RWY 22L

STANLY COUNTY (VUJ)

ADF required.		CIRCLING Rwy 4L, 22R NA at night. Rwy 22L helicopter visibility reduction below ¾ SM NA.		MISSED APPROACH: Climb to 1500 then climbing right turn to 4000 direct ALLER LOM and hold, continue climb-in-hold to 4000.	
AWOS-3 128.175	CHARLOTTE APP CON 128.325 307.8	STANLY COUNTY TOWER★ 126.275 (CTAF) 0 291.9	GND CON 121.75 254.375	CLNC DEL 121.75 254.375	



1500	4000	VU	VU LOM ALLER	Remain within 10 NM
↑	↻		2255	043°
			2400	2600
			223°	GS 3.00° TCH 40
5.1 NM				
CATEGORY	A	B	C	D
S-ILS 22L		916-1	332 (400-1)	
S-LOC 22L	1100-1	516 (500-1)	1100-1¾ 516 (500-1¾)	
CIRCLING	1260-1	651 (700-1)	1260-1¾ 651 (700-1¾)	1380-2½ 771 (800-2½)

SE-2, 05 SEP 2024 to 03 OCT 2024

SE-2, 05 SEP 2024 to 03 OCT 2024