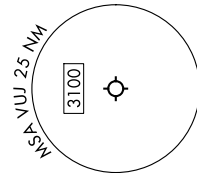


JOJO FIVE DEPARTURE (RNAV)

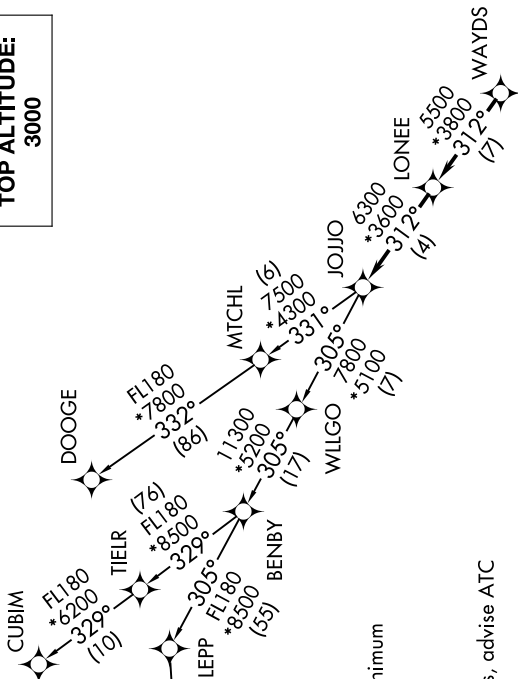
STANLY COUNTY (VUJ)
ALBEMARLE, NORTH CAROLINA

CHARLOTTE DEP CON
128.325 307.8
AWOS-3
128.175
CLNC DEL
121.75 254.375
GND CON
121.75 254.375
STANLY COUNTY TOWER*
126.275 (CTAF) 291.9

TOP ALTITUDE:
3000



SE-2, 05 SEP 2024 to 03 OCT 2024



NOTE: Chart not to scale.

RNAV 1 - DME/DME/IRU or GPS.
RADAR required.

NOONN FL180 *6100 272° (68)
BFORE FL180 *5100 272° (38)
SLEPP FL180 *8500 305° (55)
BENBY FL180 *3200 305° (17)
WILLGO *3100 305° (7)
JOJO *3600 312° (4)
LONEE *3800 312° (7)
WAYDS *3500 312° (7)

TAKEOFF MINIMUMS

Rwys 4L, 22R: NA-Environmental.
Rwy 22L: Standard.
Rwy 4R: 300-1/4 or standard with minimum climb of 315' per NM to 1000.

- NOTE: For turbo jets only.
- NOTE: If unable to accept climb rates, advise ATC on initial contact.
- NOTE: NOONN Transition ATC assigned only.
- NOTE: Upon reaching 10000 MSL, accelerate to and maintain 280K, if unable advise ATC.

DEPARTURE ROUTE DESCRIPTION

Climb on heading assigned by ATC, on RADAR vectors to WAYDS, then on depicted route to JOJO. Then on assigned transition. Maintain 3000, expect filed altitude within 10 minutes after departure.

- CUBIM TRANSITION (JOJO5.CUBIM)
- DOOGE TRANSITION (JOJO5.DOOGE)
- NOONN TRANSITION (JOJO5.NOONN)

SE-2, 05 SEP 2024 to 03 OCT 2024

JOJO FIVE DEPARTURE (RNAV)

ALBEMARLE, NORTH CAROLINA
STANLY COUNTY (VUJ)