

LOM VU 346	APP CRS 224°	Rwy Idg 5499 TDZE 584 Apt Elev 609
----------------------	------------------------	---

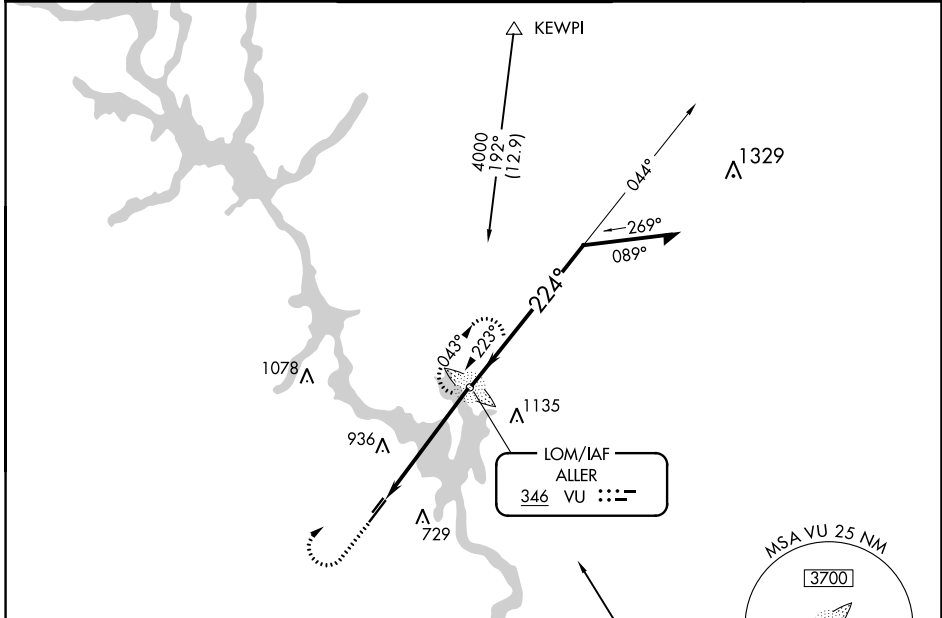
NDB RWY 22L

STANLY COUNTY (VUJ)

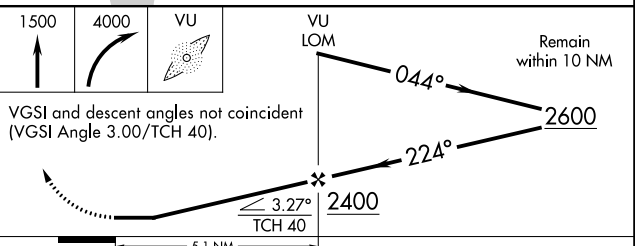
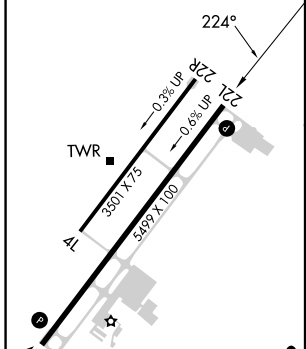
PAR Circling to Rwy 4L/22R NA at night. When local altimeter setting not received, use Asheboro altimeter setting and increase all MDA 60 feet; increase S-22L Cats C and D, and Circling Cats C and D visibility ¼ mile.

MISSED APPROACH: Climb to 1500 then climbing right turn to 4000 direct ALLER LOM and hold, continue climb-in-hold to 4000.

AWOS-3 128.175	CHARLOTTE APP CON 128.325 307.8	STANLY COUNTY TOWER★ 126.275 (CTAF) 0 291.9	GND CON 121.75 254.375	CLNC DEL 121.75 254.375
--------------------------	---	---	----------------------------------	-----------------------------------



ELEV 609	ELEV 609
----------	----------



CATEGORY	A		B		C		D	
	S-22L	1240-1	656 (700-1)	1240-1¾	656 (700-1¾)	1240-2	656 (700-2)	1240-2
CIRCLING	1260-1	651 (700-1)	1260-1¾	651 (700-1¾)	1380-2½	771 (800-2½)	1380-2½	771 (800-2½)

SE-2, 05 SEP 2024 to 03 OCT 2024

SE-2, 05 SEP 2024 to 03 OCT 2024