

WAAS CH <b>78317</b> <b>W22A</b>	APP CRS <b>223°</b>	Rwy Idg TDZE Apt Elev	<b>5499</b> <b>584</b> <b>609</b>
--	------------------------	-----------------------------	---

# RNAV (GPS) RWY 22L

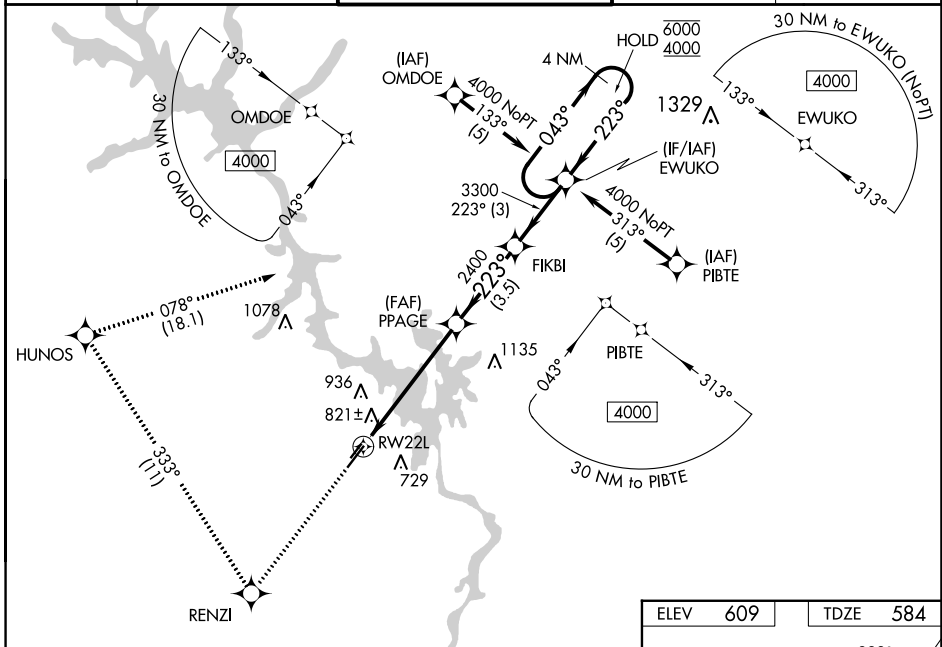
STANLY COUNTY (VUJ)

RNP APCH-GPS.

**⚠** Circling Rwy 4L, 22R NA at night.  
**⚠** Rwy 22L helicopter visibility reduction below 3/4 SM NA.  
**PAR** For uncompensated Baro-VNAV systems, LNAV/VNAV NA below -16°C or above 54°C.

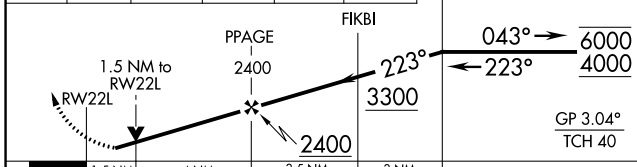
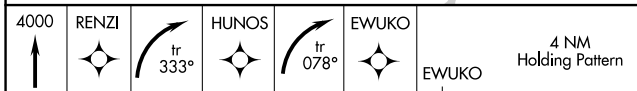
**MISSED APPROACH:** Climb to 4000 direct RENZI and right turn on track 333° to HUNOS and right turn on track 078° to EWUKO and hold.

AWOS-3 <b>128.175</b>	CHARLOTTE APP CON <b>128.325 307.8</b>	STANLY COUNTY TOWER★ <b>126.275 (CTAF) 0 291.9</b>	GND CON <b>121.75 254.375</b>	CLNC DEL <b>121.75 254.375</b>
--------------------------	---	---	----------------------------------	-----------------------------------

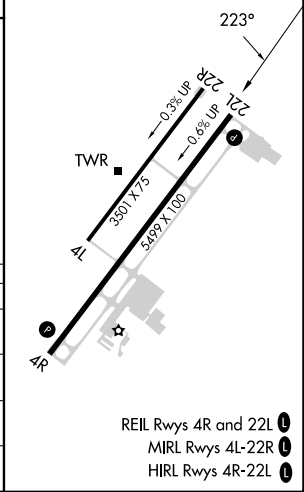


SE-2, 05 SEP 2024 to 03 OCT 2024

SE-2, 05 SEP 2024 to 03 OCT 2024



ELEV 609	TDZE 584
----------	----------



CATEGORY	A	B	C	D
LPV DA		919-1	335 (400-1)	
LNAV/VNAV DA		1272-2	688 (700-2)	
LNAV MDA	1100-1	516 (500-1)	1100-1 3/8	516 (500-1 3/8)
<b>C</b> CIRCLING	1260-1	651 (700-1)	1260-1 3/4	1380-2 1/2
			651 (700-1 3/4)	771 (800-2 1/2)

- REIL Rwys 4R and 22L **①**
- MIRL Rwys 4L-22R **②**
- HIRL Rwys 4R-22L **③**