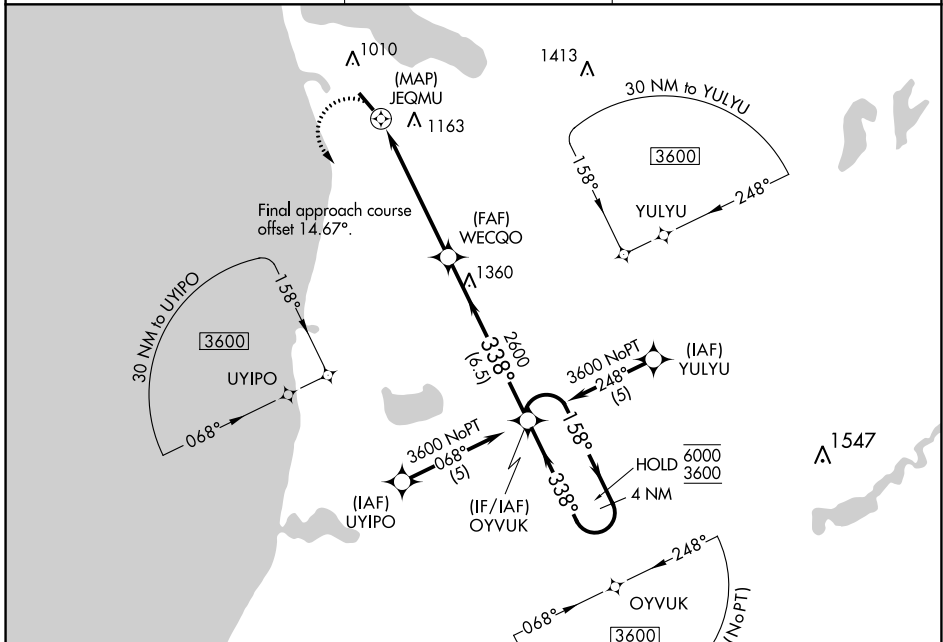


APP CRS	Rwy Idg	<b>3939</b>
<b>338°</b>	TDZE	<b>624</b>
	Apt Elev	<b>633</b>

# RNAV (GPS) RWY 33

FRANKFORT DOW MEML FLD (F'KS)

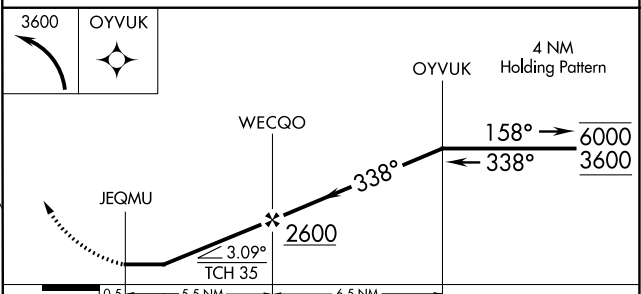
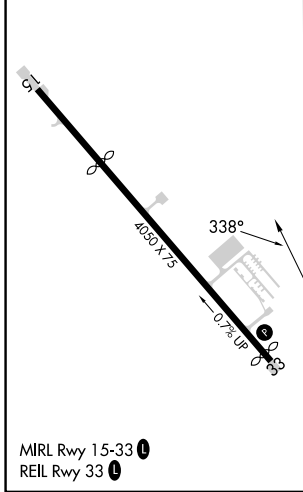
RNP APCH - GPS.		MISSED APPROACH: Climbing left turn to 3600 direct OYVUK and hold.
Procedure NA at night. Rwy 33 helicopter visibility reduction below 1 SM NA.		
AWOS-3P <b>118.325</b>	MINNEAPOLIS CENTER <b>132.9 338.3</b>	UNICOM <b>123.05</b> (CTAF) <b>0</b>



EC-1, 05 SEP 2024 to 03 OCT 2024

EC-1, 05 SEP 2024 to 03 OCT 2024

ELEV	633	TDZE	624
------	-----	------	-----



CATEGORY	A	B	C	D
LNAV MDA	1360-1	736 (800-1)	1360-2 736 (800-2)	NA
CIRCLING	1400-1 767 (800-1)	1520-1¼ 887 (900-1¼)	1520-2¾ 887 (900-2¾)	NA