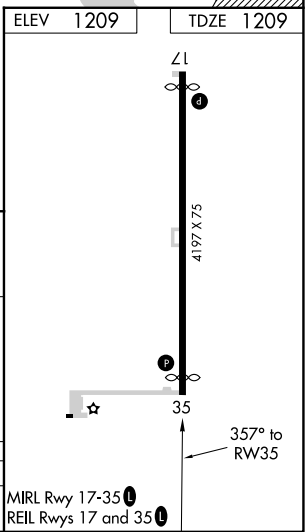
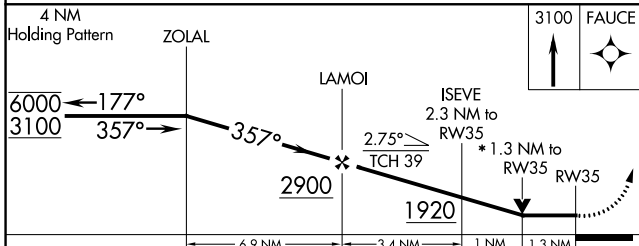
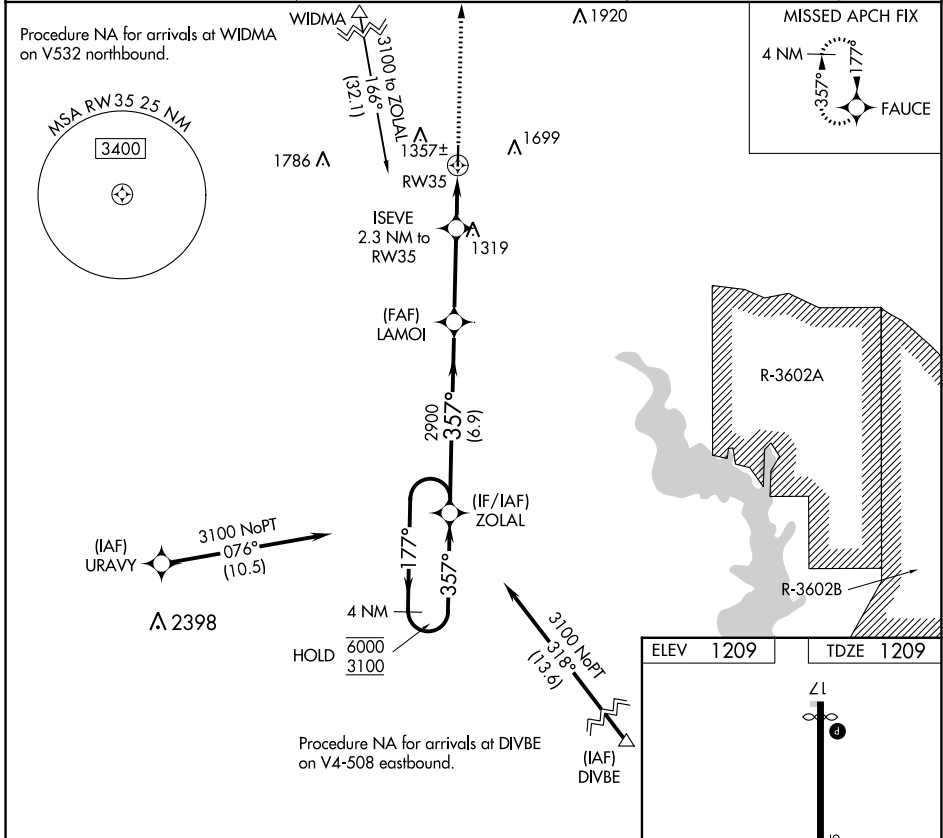


APP CRS **357°**
 Rwy Idg **3970**
 TDZE **1209**
 Apt Elev **1209**

RNAV (GPS) RWY 35
 CLAY CENTER MUNI (CYW)

RNP APCH.
 Rwy 35 helicopter visibility reduction below 3/4 SM NA. VDP NA when using Salina altimeter setting. When local altimeter setting not received, use Salina altimeter setting and increase all MDA 120 feet and LNAV Cat C visibility 3/8 SM.
 MISSED APPROACH: Climb to 3100 direct FAUCE and hold.

AWOS-3T **119.95** MARSHALL AAF APP CON * **121.25 254.35** UNICOM **122.8 (CTAF)**



CATEGORY	A	B	C	D
LNAV MDA	1580-1	371 (400-1)		NA

NC-2, 05 SEP 2024 to 03 OCT 2024

NC-2, 05 SEP 2024 to 03 OCT 2024