

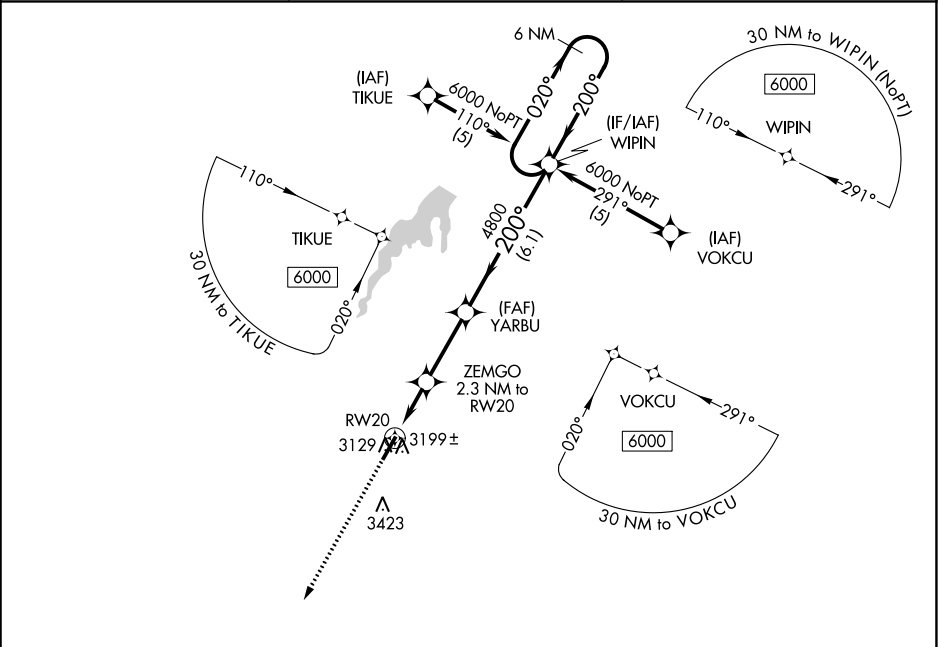
| | | |
|-------------|----------|-------------|
| APP CRS | Rwy Idg | 5022 |
| 200° | TDZE | 3090 |
| | Apt Elev | 3090 |

RNAV (GPS) RWY 20

MAJOR SAMUEL B CORNELIUS FLD (E42)

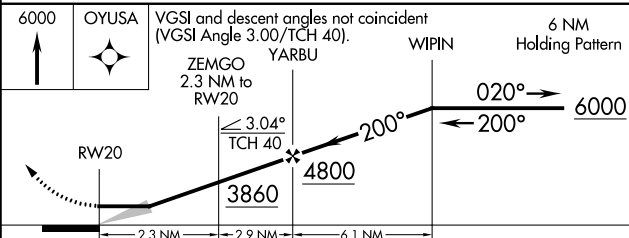
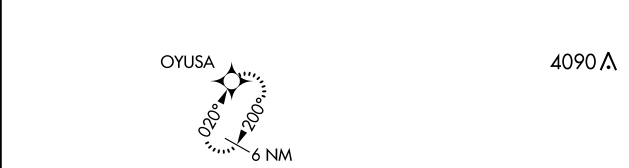
| | |
|--|--|
| <p>▽ DME/DME RNP-0.3 NA. Use Borger altimeter setting; when not received, use Rick Husband Amarillo Intl altimeter setting and increase all MDA 140 feet, increase LNAV Cat C visibility 1/4 mile, Circling Cat A visibility 1/4 mile, and Circling Cat C visibility 1/2 mile.</p> <p>▲ NA</p> | <p>MISSED APPROACH: Climb to 6000 direct OYUSA and hold, continue climb-in-hold to 6000.</p> |
|--|--|

| | | |
|---------------------------|---|----------------------|
| AWOS-3P 118.925 | ALBUQUERQUE CENTER 127.85 285.475 | CTAF 122.9 |
|---------------------------|---|----------------------|

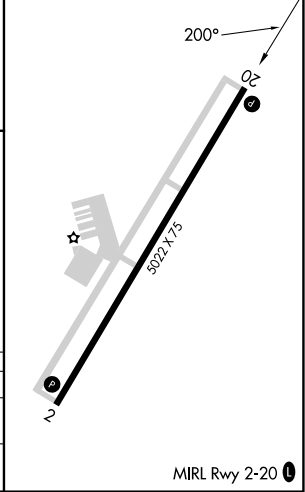


SC-2, 05 SEP 2024 to 03 OCT 2024

SC-2, 05 SEP 2024 to 03 OCT 2024



| | | | |
|------|------|------|------|
| ELEV | 3090 | TDZE | 3090 |
|------|------|------|------|



| CATEGORY | A | B | C | D |
|----------|-----------------------|-------------------------------|-------------------------------|----|
| LNVA MDA | 3540-1 | 450 (500-1) | 3540-1 1/4 450 (500-1 1/4) | NA |
| CIRCLING | 3840-1 750 (800-1) | 3840-1 1/4 750 (800-1 1/4) | 3840-2 1/4 750 (800-2 1/4) | NA |

RNAV (GPS) RWY 20

MIRL Rwy 2-20