

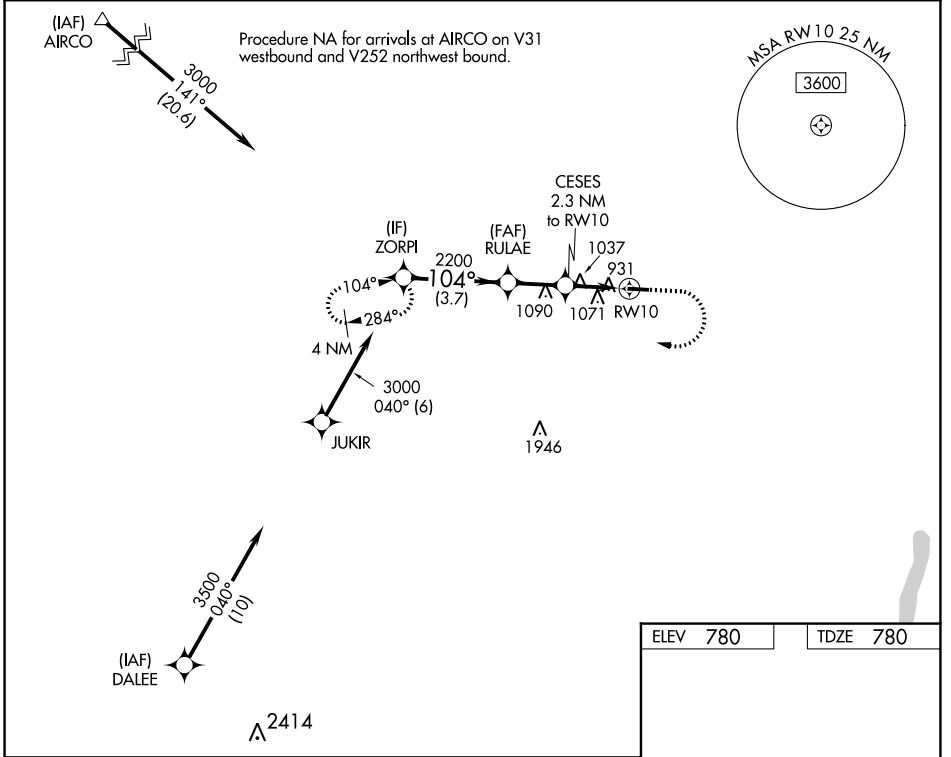
| | | | |
|--|------------------------|-----------------------------|---|
| WAAS CH 61030 W10A | APP CRS 104° | Rwy Idg TDZE Apf Elev | 3854 780 780 |
|--|------------------------|-----------------------------|---|

RNAV (GPS) RWY 10

LE ROY (5G \emptyset)

| | | |
|---|--|--|
| RNP APCH-GPS. | | MISSED APPROACH: Climb to 1500 then climbing right turn to 3000 direct ZORPI and hold. |
| <p>Procedure NA at night. Rwy 10 helicopter visibility reduction below 1 SM NA. Use Rochester altimeter setting.</p> | | |

| | | |
|----------------------------|---|--|
| ROC ASOS 124.825 | ROCHESTER APP CON 123.7 322.3 | UNICOM 122.8 (CTAF) \emptyset |
|----------------------------|---|--|



NE-2, 05 SEP 2024 to 03 OCT 2024

NE-2, 05 SEP 2024 to 03 OCT 2024

